



WYŚWIETLACZE LCD LCD DISPLAY



Autoryzowany Dystrybutor



SPIS TREŚCI

TABLE OF CONTENTS

Wyświetlacze dla przemysłu naftowego Petroleum equipment displays	02
Wyświetlacze do wind Elevator displays	03
Wyświetlacze LCD dla instrumentów pomiarowych - o niskiej temperaturze pracy Metering LCD displays low temperature working environment	04
Wyświetlacze do sprzętu medycznego Medical device displays	05
Wyświetlacze samochodowe Automotive displays	06
Wyświetlacze cyfrowych wag Digital weighing scale displays	07
Wyświetlacze do zastosowań wojskowych i obronnych Military & defense displays	08
Płytki inteligentnego kontrolera z wyświetlaczami LCD Smart controller board with LCD displays	09
Standardowe moduły COB LCD Blaze Display A part of standard COB LCD modules of Blaze Display	10
Standardowe moduły COG LCD Blaze Display A part of standard COG LCD modules of Blaze Display	13

WYŚWIETLACZE DLA PRZEMYSŁU NAFTOWEGO PETROLEUM EQUIPMENT DISPLAYS



Jako profesjonalny projektant i dostawca wyświetlaczy LCD dla przemysłu naftowego, Blaze Display zbudował relacje biznesowe z ponad 60% zasłużonymi firmami w tej branży i oferuje silne wsparcie techniczne.

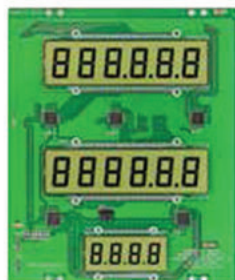
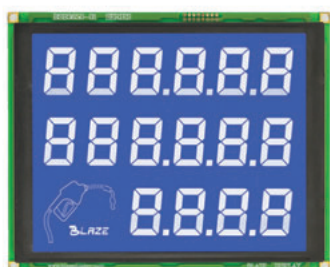
NAJWAŻNIEJSZE CECHY:

- » bezpieczeństwo produktów,
- » długa żywotność: 150000+ godzin,
- » bardzo szeroki zakres temperatury pracy: -40°C ~ +90°C,
- » krótki czas odpowiedzi,
- » duża jasność: czytelny pod światłem słonecznym,
- » wysoki kontrast,
- » funkcje antystatyczna i UV,
- » szeroki kąt widzenia,
- » podświetlany wyświetlacz LED, sprawny energetycznie i długotrwały.

As a professional LCD display designer and supplier in petroleum industry, Blaze Display has built up business relationship with over 60% distinguished companies in this field, and is famous for Blaze's strong technical support.

MAIN FEATURES:

- » fuel-friendly and high security
- » long life time: 150 000+ hrs
- » super wide working temperature range: -40°C ~ +90°C
- » fast response time
- » high brightness: sun light readable
- » high contrast ratio
- » anti-static and UV function
- » wide viewing angle
- » LED back lighting, energy efficient and long lasting



WYŚWIETLACZE DO WIND ELEVATOR DISPLAYS



Wyświetlacze do wind zazwyczaj muszą być dostosowywane pod względem wyświetlanych informacji o obecnym piętrze, dacie, czasie z dynamiczną animacją ruchu windy.

Większość wyświetlaczy windowych to wyświetlacze typu segmentowego i punktowego w kolorze czerwonym, niebiesko-białym, czarno-białym, zielonym, pełnym kolorze i innymi.

NAJWAŻNIEJSZE CECHY:

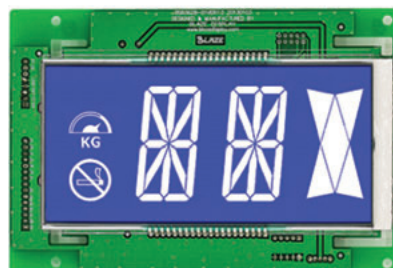
- » duża rozdzielczość,
- » różnorodność opcji rozmiaru ze względu na potrzeby pracy windy i reklamy,
- » podświetlany wyświetlacz LED z dużą jasnością i wysokim kontrastem,
- » odporny na wibracje i zakłócenia elektromagnetyczne,
- » technologie: TN / HTN / STN-Blue / VA-Black / TFT / LED Backlight.

Display for Elevator usually needs to be customized, with appointed display content about floor 1~99, overload, date, time with dynamic show to run direction and so on.

Most of elevator displays are segment type and dot matrix type, and color can be red, blue-white, black-white, green, full color and others.

MAIN FEATURES:

- » high resolution
- » a variety of size options for the needs of elevator operating and advertising
- » LED backlight with high brightness & contrast
- » vibration & electric-magnetic interference
- » anti-vibration (shock resistance)
- » technology: TN / HTN / STN-Blue / VA-Black / TFT / LED Backlight



WYŚWIETLACZE LCD DLA INSTRUMENTÓW POMIAROWYCH O NISKIEJ TEMPERATURZE PRACY

METERING LCD DISPLAYS LOW TEMPERATURE WORKING ENVIRONMENT



Do tej pory Blaze Display wyprodukował około 10 bilionów wysokiej jakości, niezawodnych wyświetlaczy LCD o długiej żywotności, szerokim zakresie temperatury pracy i funkcji anti-UV dla branży pomiarowej. Nasze wyświetlacze LCD są szeroko stosowane w miernikach zużycia energii, wodomierzach, gazomierzach, miernikach mocy itd.

NAJWAŻNIEJSZE CECHY:

- » długa żywotność: 15-20 lat,
- » szeroki zakres temperatury pracy $-40^{\circ}\text{C} \sim +85^{\circ}\text{C}$,
- » anti-UV i antystatyczność,
- » niski pobór mocy.

So far, Blaze Display supplied around 10 billion high quality and reliability LCD displays with long life time, super wide operating temperature, and anti UV function for metering industry. Our Metering LCD Displays are widely used for kWh Meter (single phase and three phase meter), smart energy meter, prepayment energy meter, multifunction energy meter, water meter, gas meter, power meter and so on.

MAIN FEATURES:

- » long life time: 15-20 years
- » super wide operating temperature: $-40^{\circ}\text{C} \sim +85^{\circ}\text{C}$
- » anti UV and static
- » scrape rate control within 0.1%
- » low power consumption



WYŚWIETLACZE DO SPRZĘTU MEDYCZNEGO MEDICAL DEVICE DISPLAYS



Blaze Display produkuje rozmaite wyświetlacze LCD do zastosowań w instrumentacji medycznej wymagającej wysokiej jakości i precyzji wyświetlania. Nasze tablice świetlne są sztywne i odporne na wstrząsy, więc nadają się do montowania w salach operacyjnych. Dodatkowo, nasze wyświetlacze są czytelne przy świetle słonecznym i odpowiednie do urządzeń przenośnych.

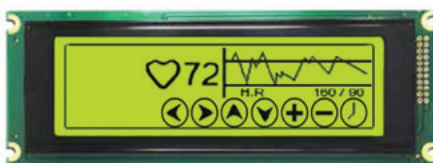
NAJWAŻNIEJSZE CECHY:

- » wysoka rozdzielczość,
- » niski współczynnik odbicia światła,
- » zintegrowany monitoring,
- » zgodny z RoHS.

Blaze Display manufactures various LCD displays for medical devices which have high definition and high precision medical imaging capability. Our medical display boards are rigid and shock resistant, thus able to withstand any physical impact in operating rooms. In addition, our displays are sunlight readable and suitable for portable devices.

MAIN FEATURES:

- » high resolution
- » low reflectance
- » integrated monitoring
- » RoHS compliance



WYŚWIETLACZE SAMOCHODOWE AUTOMOTIVE DISPLAYS



Znajdują zastosowanie w nawigacjach GPS, klimatyzacjach, prędkościomierzach, systemach audio, tablicach rozdzielczych, zegarach, wskaźnikach biegów, telewizji itd.

NAJWAŻNIEJSZE CECHY:

- » zgodność ze standardem ISO/TS 16949,
- » dostępność wyświetlaczy TFT wysokiej rozdzielczości,
- » intensywność kolorów,
- » dobra widoczność dzięki optycznej przyczepności szklanej osłonki,
- » szeroki kąt widzenia,
- » długa żywotność (do 20 lat),
- » system antywibracyjny,
- » rozszerzony zakres temperatury pracy do +90°C.

Automotive LCD displays are mainly customized and designed for high quality, high reliability and working in best performance, which can be in application of various car components, such as GPS navigation, climate control, speedometer, car audio, dashboard, clock, gear indicator, televisions and so on.

MAIN FEATURES:

- » meet ISO/TS 16949 Standard
- » TFT available in high resolution
- » vivid colors available
- » good visibility by optical adhesion of cover glass
- » I2C/SPI interface with LED backlight
- » super wide viewing angle
- » anti glare and high brightness
- » long life time range up to 20 years
- » anti-vibration
- » extended operating temperature range up to +90°C



WYŚWIETLACZE CYFROWYCH WAG DIGITAL WEIGHING SCALE DISPLAYS



Firma Blaze produkuje różne niestandardowe wyświetlacze, wykorzystywane w podstawowych wagach cyfrowych, sklepowych, medycznych itd.

NAJWAŻNIEJSZE CECHY:

- » interfejs I2C/SPI,
- » niskie zużycie mocy,
- » szeroki kąt widzenia,
- » opcjonalnie wyświetlacz z matrycą punktowy i segmentowy,
- » polecenie przesunięcia na każdej linii niezależnie,
- » kompaktowy projekt o dużej niezawodności,
- » opcjonalnie panel dotykowy,
- » technologie HTN / STN / FSTN o zielonym / żółto-zielonym / niebieskim / szarym tle i podświetleniu LED.

Your scales weigh the heaviest commitment in the world, and we help accurately display it. We make various customized displays used for basic digital scales, price computing scales, counter scales, medical scales and so on.

MAIN FEATURES:

- » I2C/SPI interface available
- » ultra-low power consumption
- » wide viewing angle
- » dot matrix type and segment type for option
- » command of shifting on each line independently
- » compact design with high reliability
- » touch panel (optional)
- » HTN / STN / FSTN technologies in green / yellow-green / blue / gray background with LED backlight available



WYŚWIETLACZE DO ZASTOSOWAŃ WOJSKOWYCH I OBRONNYCH MILITARY & DEFENSE DISPLAYS



Firma Blaze współpracuje z wieloma kontrahentami z sektora obronnego dzięki niezawodności swoich produktów.

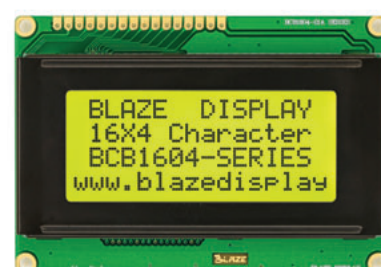
During the countless times maintenance of world peace and justice, LCD from Blaze always follows like a shadow. With the high reliability of our products, we have established long-term cooperation with some overseas defense contractors.

NAJWAŻNIEJSZE CECHY:

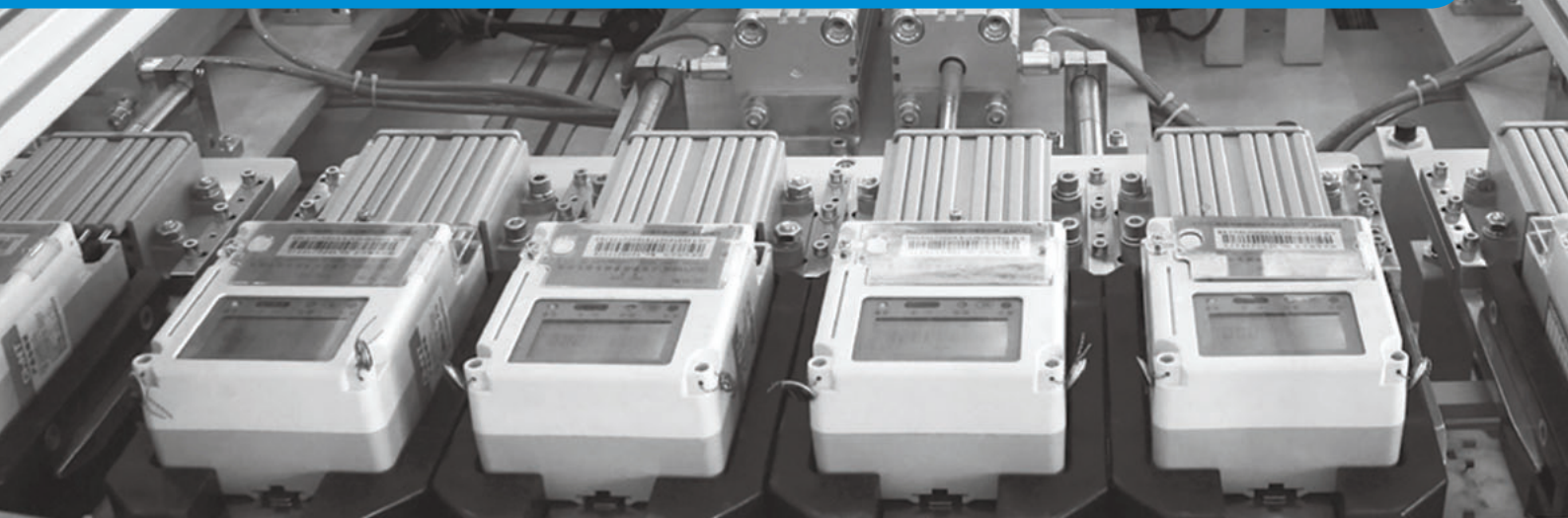
- » wysoki kontrast, duża jasność,
- » system antywibracyjny,
- » zgodność z standardem wojskowej normy: MIL-STD-810G,
- » czytelny przy świetle słonecznym z szerokim kątem widzenia,
- » anti-UV,
- » szybki czas odpowiedzi i duża częstotliwość,
- » różne połączenia wejść jak USB, RS-232, RS-486, itp.

MAIN FEATURES:

- » high contrast & high brightness
- » anti-vibration
- » meet US Military Standard: MIL-STD-810G
- » allowing readability in direct sunlight with a wide viewing angle
- » anti UV
- » quick response time, refresh rate to avoid lag
- » parallel/serial communications interface
- » various input connections, such as USB, RS-232, RS-485, etc.



PŁYTKA INTELIGENTNEGO KONTROLERA Z WYŚWIETLACZAMI LCD SMART CONTROLLER BOARD WITH LCD DISPLAYS



Blaze oferuje również kompleksową usługę od projektowania płytki do lutowania SMD.

NAJWAŻNIEJSZE CECHY:

- » prostota testu i instalacji produktów,
- » szeroki zakres zastosowań,
- » dostosowanie do potrzeb klienta,
- » wysoka jakość,
- » dostępna płytki konwertująca,
- » opcje interfejsów: RGB, RS232, MCU, LVDS, itp.

RODZAJE PRODUKTÓW:

Płytki inteligentnego kontrolera z modułem LCD do systemów diagnostyki medycznej

Płytki inteligentnego kontrolera z modułem LCD do zastosowań domowych

Płytki inteligentnego kontrolera z LCD typu COG do Instrumentów

Płytki inteligentnego kontrolera z modułem LCD do sprzętu przemysłowego

Płytki inteligentnego kontrolera z panelem LCD do wind

Apart from being a professional LCD display manufacturer, Blaze also provides one-stop service from smart main board design to SMD which can bring more convenience for our customer.

MAIN FEATURES:

- » convenient for testing and installation
- » wide application field
- » customized as per customer's requirements
- » high quality standard
- » conversion board available
- » multi-interface options: RGB, RS232, MCU, LVDS, etc.

TYPES OF PRODUCTS:

Smart Controller Board with LCD Module for Medical Control System

Smart Controller Board with LCD Module for Home Appliance

Smart Controller Board with COG Type LCD for Instrument

Smart Controller Board with LCD Module for Industrial Equipment

Smart Controller Board with LCD Panel for Elevator

STANDARDOWE MODUŁY COG LCD BLAZE DISPLAY

A PART OF STANDARD COG LCD MODULES OF BLAZE DISPLAY

Format wyświetlacza Display Format	Nr No.	Symbol produktu Part Number	Obudowa Tech.	Rozmiar obudowy (Dł. x Sz. x Wys., mm) Outline size (L x W x H, mm)	Obszar wyświetlania (Dł. x Sz. x Wys., mm) Viewing Area (L x W, mm)	Obszar aktywny (Dł. x Sz., mm) Active Area (L x W, mm)	Sterownik ukł. scal. Controller IC	Napięcie Voltage	Zakres temp. (°C) Top (°C)	Interfejs Interface	Podświetlenie Backlight	Uwagi Remarks
8x1	1	BCB0801-C01	COB	60.00x33.00x10.70	44.00x13.00	40.83x7.93	SPLC780D *	5V	-30~+80	Parallel	LED	1x16PIN
	2	BCB0801-02	COB	84.00x44.00x13.30	62.00x17.80	58.87x11,12	AIP31066 *	5V	-20~+70	Parallel	LED	1x16PIN
	3	BCB0801-03	COB	85.00x29.00x13.00	64.00x16.50	60.40x12.10	SPLC780D *	5V	0~+50	Parallel	LED	2x7PIN
	4	BCB0801-04	COB	80.00x36.00x13.50	38.00x16.00	35.18x8.28	SPLC780D *	5V	-20~+70	Parallel	LED	1x16PIN
	5	BCB0801-05	COB	59.00x25.80x13.70	47.00x15.50	39.90x8.95	SPLC780D *	5V	-10~+60	Parallel	LED	4x4PIN
8x2	6	BCB0802-01	COB	40.00x35.15x7.40	30.50x14.10	25.74x9.48	SPLC780D *	5V	-20~+70	Parallel	LED	2x8PIN
	7	BCB0802-02	COB	58.00x32.00x13.50	38.00x16.00	27.81x11.50	SPLC780D *	5V	-20~+70	Parallel	LED	2x7PIN
	8	BCB0802-02B	COB	58.00x32.00x13.50	38.00x16.00	27.81x11.50	SPLC780D *	5V	-20~+70	Parallel	LED	2x8PIN
	9	BCB0802-04	COB	33.70x44.40x8.90	26.50x12.20	23.80x8.48	AIP31066 *	5V	-30~+80	Parallel	LED	2x7PIN
	10	BCB0802-05	COB	45.00x40.00x10.0	38.00x16.00	27.81x11.50	SPLC780D *	5V	-30~+80	Parallel	LED	1x14PIN
16x1	11	BCB1601-01	COB	80.00x36.00x13.50	66.00x16.00	59.62x6.56	ST7066U-0A *	3V / 5V	-20~+70	Parallel	LED	1x19PIN
	12	BCB1601-02	COB	80.00x32.00x13.50	64.50x14.50	59.46x5.96	SPLC780D *	5V	-20~+70	Parallel	LED	1x16PIN
	13	BCB1601-03A	COB	80.00x36.00x11.80	64.30x13.90	59.46x5.96	SPLC780D *	5V	-20~+70	Parallel	LED	1x16PIN
	14	BCB1601-03B	COB	80.00x36.00x11.00	64.50x14.50	59.46x5.96	SPLC780D *	5V	-20~+70	Parallel	LED	1x16PIN
	15	BCB1601-03C	COB	80.00x36.00x11.00	64.30x13.90	59.46x5.96	SPLC780D *	5V	-20~+70	Parallel	LED	1x16PIN
	16	BCB 1601-04	COB	80.00x36.00x9.00	65.00x14.00	59.46x5.96	AIP31066 *	5V	-10~+60	Parallel	LED	2x16PIN
	17	BCB1601-05	COB	122.00x33.00x13.50	99.00x13.00	94.84x9.66	SPLC780D *	3V / 5V	-20~+70	Parallel	LED	1x16PIN
16x2	18	BCB1602-C01	COB	71.50x31.00x14.50	62.00x16.00	55.73x10.98	ST7066 *	3V / 5V	-20~+70	Parallel	LED	1x16PIN
	19	BCB1602-02	COB	65.50x36.70x12.10	61.80x14.80	55.46x10.75	AIP31066 *	3V / 5V	-10~+60	Parallel	LED	1x16PIN
	20	BCB1602-03	COB	80.00x36.00x11.80	64.30x16.00	55.46x10.76	SPLC780D *	3V / 5V	-20~+70	Parallel	LED	1x16PIN
	21	BCB1602-03A	COB	80.00x36.00x11.00	64.40x14.50	57.70x9.40	SPLC780D *	3V / 5V	-20~+70	Parallel	LED	1x16PIN
	22	BCB1602-03B	COB	80.00x36.00x11.00	64.50x14.50	55.70x11.00	AIP31066 *	3V / 5V	0~+50	Parallel	LED	1x16PIN
	23	BCB1602-03C	COB	80.00x36.00x13.00	64.50x14.50	55.70x11.00	AIP31066 *	3V / 5V	-20~+70	Parallel	LED	1x16PIN
	24	BCB1602-03D	COB	81.70x74.50x11.00	64.50x14.50	55.70x11.00	AIP31066 *	3V / 5V	-20~+70	Parallel	LED	v1x16PIN
	25	BCB1602-03E	COB	80.00x36.00x13.10	64.00x17.00	55.46x10.76	ST7070-0B *	5V	-20~+70	SPI & Parallel	LED	2x7 & 1x16PIN
	26	BCB1602-03F	COB	89.00x44.00x11.00	61.00x16.00	55.70x11.00	AIP31066 *	5V	-25~+80	4BIT Parallel	LED	2x8PIN
	27	BCB 1602-04	COB	80.00 x40.00x8.60	66.70x18.00	62.76x11.60	SPLC780D *	3V / 5V	-20~+70	Parallel	LED	1x16PIN
	28	BCB 1602-05	COB	84.00x44.00x11.80	64.30x16.00	55.46x10.76	SPLC780D *	3V / 5V	-20~+70	Parallel	LED	1x16PIN
	29	BCB16Q2-05A	COB	84.00x44.00x11,80	62.00x18.00	56.20x11.50	ST7066 *	3V / 6V	-20~+70	Parallel	LED	1x16PIN
	30	BCB 1602-07	COB	85.00x30.00x11.80	64.30x16.00	55.46x10.76	SPLC780D *	3V / 5V	-20~+70	Parallel	LED	2x7PIN
	31	BCB16Q2-07B	COB	85.00x30.00x11.80	64.30x16.00	55.46x10.76	AIP31066 *	5V	-20~+70	Parallel	LED	2x8PIN
	32	BCB1602-08A	COB	85.00x36.00x12.00	64.30x16.00	55.46x10.76	SPLC780D *	3V / 5V	-20~+70	Parallel	LED	2x8PIN
	33	BCB1602-08B	COB	85.00x36.00x12.00	64.30x16.00	55.46x10.76	SPLC780D *	3V / 5V	-20~+70	Parallel	LED	2x7PIN
	34	BCB 1602-09	COB	103.00x50.00x12.00	61.00x15.70	55.46x10.76	SPLC780D *	3V / 5V	-20~+70	Parallel	LED	1x16PIN
	35	BCB 1602-10	COB	122.00x44.00x13.50	99.00x24.00	94.84x19.90	SPLC780D *	3V / 5V	-20~+70	Parallel	LED	1x16PIN
	36	BCB1602-11	COB	122.00x44.00x14.00	99.00x24.00	94.84x19.90	AIP31066 *	5V	-20~+70	Parallel	LED	1x16PIN
	37	BCB 1602-12	COB	100.00x38.80x13.00	80.20x20.40	76.37x16.02	ST7066U-0A *	3V / 5V	-20~+70	Parallel	LED	1x16PIN
38	BCB16Q2-13	COB	80.00x36.00x9.80	64.00x16.00	56.21x11.50	SPLC780D-001B-C	5V	-20~+70	Parallel	LED	1x17PIN	
39	BCB1602-14	COB	59.00x29.30x5.00	52.00x15.00	46.70x9.84	SPLC780D-001B-C	5V	-20~+70	Parallel	LED	1x15PIN	
16x4	40	BCB1604-01A	COB	87.00x60.00x12.80	62.00x26.00	56.20x20.80	SPLC780D *	3V / 5V	-20~+70	Parallel	LED	1x16PIN
	41	BCB 1604-01B	COB	87.00x60.00x11.00	62.00x25.50	56.20x20.80	SPLC780D *	3V / 5V	-20~+70	Parallel	LED	1x16PIN
	42	BCB1604-01C	COB	81.70x74.50x11.00	62.00x25.50	56.20x20.80	AIP31066 *	3V / 5V	0~+50	Parallel	LED	2x8 & 1x4PIN
	43	BCB1604-01D	COB	87.00x60.00x12.80	62.00x25.80	56.20x20.80	AIP31066 *	3V / 5V	0~+50	Parallel	LED	2x8 & 1x4PIN
20x1	44	BCB2001-01	COB	182.00 x33.50x12.81	154.40x15.30	147.30x11.70	SPLC780D *	5V	-20~+70	Parallel	LED	1x16PIN
20x2	45	BCB2002-C01	COB	80.00x36.00x8.00	66.00x16.00	60.70x11.57	SPLC780D *	5V	-20~+70	Parallel	LED	1x16PIN
	46	BCB2002-02	COB	116.00x37.00x12.90	85.00x18.60	76.78x11.40	SPLC780D *	3V / 5V	-20~+70	Parallel	LED	2x8PIN
	47	BCB2002-02B	COB	116.00x37.00x12.90	85.00x18.60	76.78x11.40	SPLC780D *	3V / 5V	-20~+70	Parallel	LED	2x8PIN
	48	BCB2002-04	COB	180.00x40.00x13.50	149.00x23.00	143.85x20.80	SPLC780D *	3V / 5V	-20~+70	Parallel	LED	2x8PIN
20x4	49	BCB2004-01	COB	77.00x46.70x11.50	60.00x22.00	55.12x17.56	AIP31066 *	5V	-20~+70	Parallel	LED	1x16PIN
	50	BCB2004-02	COB	93.00x58.00x12.50	73.00x39.00	68.70x31.12	SPLC780D *	5V	-20~+70	Parallel	LED	1x16 & 1x20PIN
	51	BCB2004-03	COB	98.00x60.00x13.10	77.00x25.20	70.40x20.80	SPLC780D *	5V	-20~+70	Parallel	LED	1x16PIN
	52	BCB2004-04	COB	116.00x46.00x8.50	76.00x25.20	70.40x20.80	SPLC780D *	5V	-20~+70	Parallel	LED	2x9PIN
	53	BCB2004-05	COB	118.00x43.00x13.10	77.00x25.20	70.36x20.44	SPLC780D *	5V	-20~+70	Parallel	LED	2x7PIN
	54	BCB2004-08	COB	146.00x62.50x14.00	123.00x42.60	118.85x38.10	SPLC780D *	5V	-20~+70	Parallel	LED	1x16PIN

Format wyświetlacza Display Format	Nr No.	Symbol produktu Part Number	Obudowa Tech.	Rozmiar obudowy (Dl. x Sz. x Wys., mm) Outline size (L x W x H, mm)	Obszar wyświetlania (Dl. x Sz. x Wys., mm) Viewing Area (L x W, mm)	Obszar aktywny (Dl. x Sz., mm) Active Area (L x W, mm)	Sterownik ukł. scal. Controller IC	Napięcie Voltage	Zakres temp. (°C) Top (°C)	Interfejs Interface	Podświetlenie Backlight	Uwagi Remarks
24x2	55	BCB2402-01	COB	109.00x27.10x6.50	96.30x19.60	88.30x11.60	ST7066U-OE-B	5V	-20~+70	Parallel	LED	1x16PIN
	56	BCB2402-C01	COB	237.00x67.50x10.00	202.00x35.50	193.76x26.70	SPLC780D *	5V	-20~+70	Parallel	LED	2x8PIN
	57	BCB2402-03	COB	118.00x36.00x14.00	93.50x15.80	88.30x11.50	S6A0069 *	5V	-20~+70	Parallel	LED	2x8PIN
40x2	58	BCB4002-01	COB	182.00x33.50x14.00	154.40x16.50	147.50x11.50	SPLC780 *	5V	-20~+70	Parallel	LED	2x8PIN
40x4	59	BCB4004-01	COB	190.00x54.00x14.00	147.00x29.50	140.45x20.32	KS0066 *	5V	-20~+70	Parallel	LED	2x9PIN
122x32	60	BGB12232-C01	COB	93.50x45.00x17.30	60.00x18.00	48.76x14.68	ST7920 *	5V	-20~+70	SPI & Parallel	LED	20PIN FPC, 9PIN SERIAL, 4PIN USB
	61	BGB12232-C02	COB	65.60x29.20x5.40	54.80x19.10	48.76x15.32	SBN1661 *	5V	-20~+70	Parallel	LED	20PIN FPC
	62	BGB12232-C03	COB	65.60x29.20x5.40	54.80x19.10	48.76x15.32	SBN1661 *	5V	-20~+70	Parallel	LED	20PIN FFC
	63	BGB12232-01	COB	66.30x27.50x8.50	54.80x18.30	48.76x14.36	AIP31020 *	5V	-20~+70	SPI	LED	8PIN
	64	BGB12232-01A	COB	65.40x28.20x 7.00	54.80x19.00	48.76x14.36	AIP31520 *	5V	-20~+70	Parallel	LED	2x10PIN
	65	BGB 12232-02	COB	68.60x27.50x7.20	61.00x18.00	48.76x14.68	SBN1661 *	5V	-20~+70	Parallel	LED	18PIN FPC
	66	BGB 12232-03	COB	74.00x40.00x8.60	60.00x18.00	48.76x14.68	AIP31020 *	5V	-20~+70	SPI	LED	9PIN
	67	BGB12232-04	COB	76.30x29.00x5.80	61.00x19.00	48.76x14.68	SBN1661 *	5V	-20~+70	Parallel	LED	2x9PIN
	68	BGB 12232-05	COB	76.40x29.10x7.00	61.00x18.00	48.76x14.68	SBN1661 *	5V	-20~+70	Parallel	LED	2x9PIN
	69	BGB12232-Q6	COB	78.00x41.50x9.80	60.00x18.00	48.76x14.68	SBN1661 *	5V	-20~+70	Parallel	LED	1x20PIN
	70	BGB 12232-07	COB	80.80x29.10x12.80	59.98x18.00	48.76x14.68	SBN1661 *	5V	-20~+70	Parallel	LED	2x9PIN
	71	BGB 12232-08	COB	80.00x36.00x12.80	60.00x18.00	48.76x14.68	SBN1661 *	5V	-20~+70	Parallel	LED	1x18PIN
	72	BGB 12232-09	COB	84.00x44.00x12.80	60.00x18.00	48.76x14.68	SBN1661 *	5V	-20~+70	Parallel	LED	1x18PIN
	73	BGB 12232-10	COB	84.00x44.00x12.80	60.00x18.00	48.76x14.68	SBN1661 *	5V	-20~+70	SPI & Parallel	LED	1x16PIN 1x8PIN
	74	BGB12232-11A	COB	64.50x30.00x6.00	60.00x20.00	57.32x16.30	SBN1661 *	5V	-20~+70	Parallel	LED	18PIN FPC
	75	BGB 12232-12	COB	76.80x28.00x8.50	61.00x19.00	58.52x17.24	AIP31020 *	5V	-20~+70	SPI	LED	7PIN
76	BGB 12232-13	COB	84.00x 44.00x10.20	60.00x18.00	53.64x15.64	SED1520/SNB1661	5V	-20~+70	Parallel	LED	1x20PIN	
128x32	77	BGB 12832-01	COB	80.00x36.00x12.80	60.00x18.00	51.16x14.36	AIP31020 *	5V	-20~+70	SPI & Parallel	LED	1x20PIN
	78	BGB12832-02	COB	84.00x44.00x14.10	70.00x20.00	66.52x16.60	AIP31020 *	5V	-20~+70	SPI & Parallel	LED	1x18PIN
	79	BGB12832-03	COB	110.00x65.00x13.50	75.90x25.10	72.66x18.14	AIP31107 *	5V	-20~+70	Parallel	LED	1x18PIN
128x64	80	BGB12864-01	COB	54.00x50.00x7.45	43.50x28.80	40.92x24.92	AIP31108 *	5V	-20~+70	Parallel	LED	1x20PIN
	81	BGB12864-01A	COB	54.00x50.00x7.45	44.00x29.00	40.53x26.45	AIP31020 *	3V / 5V	-20~+70	SPI & Parallel	LED	1x20PIN
	82	BGB12864-02	COB	63.20x52.20x11.50	54.00x36.00	49.88x31.32	SPLQ108 *	5V	-20~+70	Parallel	LED	1x20PIN
	83	BGB12864-03	COB	73.20x60.00x9.00	62.00x40.00	56.28x34.52	AIP31108 *	5V	-20~+70	Parallel	LED	1x20PIN
	84	BGB12864-04	COB	75.00x52.00x12.90	55.00x38.00	52.43x31.30	AIP31020 *	5V	-20~+70	Parallel	LED	1x20PIN FPC
	85	BGB12864-05	COB	75.00x53.00x12.00	60.00x32.40	55.00x27.48	AIP31108 *	5V	-20~+70	Parallel	LED	1x20PIN
	86	BGB12864-05A	COB	75.00x52.70x 9.50	60.00x32.60	55.00x27.48	AIP31108 *	5V	-20~+70	Parallel	LED	1x20PIN
	87	BGB12864-05B	COB	75.00x52.70x 9.50	60.00x32.60	55.00x27.48	AIP31108 *	5V	-20~+70	Parallel	LED	1x20PIN
	88	BGB12864-06	COB	75.00x55.00x12.00	60.00x32.50	55.00x27.48	KS0108 *	5V	-20~+70	Parallel	LED	1x20PIN
	89	BGB12864-07	COB	78.00x70.00x12.00	62.00x44.00	56.28x38.36	AIP31108 *	5V	-20~+70	Parallel	LED	1x20PIN
	90	BGB12864-07A	COB	78.00x70.00x13.00	62.00x44.00	56.28x38.36	AIP31108 *	5V	-20~+70	Parallel	LED	1x20PIN
	91	BGB12864-07B	COB	78.00x70.00x12.00	62.00x44.00	56.28x38.36	RA6963 *	5V	-20~+70	Parallel	LED	1x20PIN
	92	BGB12864-07C	COB	78.00x70.00x12.00	62.00x44.00	56.28x38.36	ST7920 *	3V / 5V	-20~+70	SPI & Parallel	LED	1x20PIN
	93	BGB 12864-08	COB	88.00x46.00x8.90	60.00x32.60	55.00x27.48	AIP31108 *	5V	-20~+70	Parallel	LED	1x20PIN
	94	BGB 12864-09	COB	93.00x70.00x12.50	72.00x40.00	66.52x33.24	AIP31020 *	3V / 5V	-20~+70	SPI & Parallel	LED	1x20PIN
	95	BGB 12864-09A	COB	93.00x70.00x12.50	72.00x40.00	66.52x33.24	AIP31108 *	3V / 5V	-20~+70	Parallel	LED	1x20PIN
	96	BGB12864-Q9B	COB	93.00x70.00x12.50	72.00x40.00	66.52x33.24	AR6963 *	3V / 5V	-20~+70	Parallel	LED	1x20PIN
	97	BGB12864-09D	COB	93.00x70.00x12.50	72.00x40.00	66.52x33.24	AIP31020 *	3V / 5V	-20~+70	SPI & Parallel	LED	1x20PIN
	98	BGB12864-09E	COB	93.00x70.00x13.20	70.70x38.80	66.52x33.24	AIP31108 *	3V / 5V	-20~+70	Parallel	LED	1x20PIN
	99	BGB12864-09F	COB	93.00x64.00x13.00	72.00x40.00	66.52x33.24	AIP31108 *	3V / 5V	-20~+70	Parallel	LED	1x20PIN
	100	BGB12864-09G	COB	93.00x64.00x13.20	70.70x38.80	66.52x33.24	AIP31108 *	3V / 5V	-20~+70	Parallel	LED	1x20PIN
	101	BGB12864-10	COB	106.00x69.00x12.00	62.00x44.00	56.28x38.36	AIP31108 *	5V	-20~+70	Parallel	LED	2x10PIN
	102	BGB12864-11	COB	113.00x65.00x13.50	73.40x38.80	66.52x33.24	KS0108 *	5V	-20~+70	Parallel	LED	1x20PIN
	103	BGB 12864-12	COB	103.80x52.00x9.30	72.50x39.50	66.52x33.24	AIP31108 *	5V	-20~+70	Parallel	LED	2x10PIN
104	BGB12864-13	COB	100.00x60.50x11.50	70.30x38.50	66.52x33.24	AIP31108 *	5V	-20~+70	Parallel	LED	1x20PIN	
128x128	105	BGB128128-01	COB	92.00x106.00x12.10	73.00x73.00	70.35x70.35	SAP1024B *	5V	-20~+70	Parallel	LED	1x20PIN
160x32	106	BGB16032-01	COB	116.00x35.00x11.50	83.00x18.50	76.76x15.32	AIP31020 *	3V / 5V	-20~+70	SPI & Parallel	LED	2x8PIN
	107	BGB16032-02	COB	116.00x44.00x9.50	99.00x24.00	94.36x18.56	SBN1661 *	5V	-20~+70	Parallel	LED	1x20PIN
	108	BGB16032-03	COB	122.00x44.00x14.00	99.00x24.00	94.36x18.84	ST7920 *	3V / 5V	-20~+70	SPI & Parallel	LED	1x20PIN
	109	BGB16032-03A	COB	116.00x44.00x13.25	99.00x24.00	89.55x18.19	ST7920 *	3V / 5V	-20~+70	SPI & Parallel	LED	1x20PIN
	110	BGB16032-05	COB	122.00x44.00x13.30	99.00x24.00	89.55x18.19	ST7920 *	3V / 5V	-20~+70	SPI & Parallel	LED	1x20PIN

Format wyświetlacza Display Format	Nr No.	Symbol produktu Part Number	Obudowa Tech.	Rozmiar obudowy (Dł. x Sz. x Wys., mm) Outline size (L x W x H, mm)	Obszar wyświetlania (Dł. x Sz. x Wys., mm) Viewing Area (L x W, mm)	Obszar aktywny (Dł. x Sz., mm) Active Area (L x W, mm)	Stworz. ukl. scal. Controller IC	Napięcie Voltage	Zakres temp. (°C) Top (°C)	Interfejs Interface	Podświetlenie Backlight	Uwagi Remarks
160x32	111	BGB16032-05A	COB	122.00x44.00x13.50	99.00x24.00	89.55x18.19	ST7920 *	3V / 5V	-20~+70	SPI & Parallel	LED	1x22PIN
	112	BGB16032-06	COB	122.00x44.00x13.30	99.00x24.00	89.55x18.19	AIP31108 *	3V / 5V	-20~+70	Parallel	LED	1x20PIN
160x64	113	BGB16064-01	COB	98.00x60.00x14.00	77.00x26.00	70.36x20.44	AIP31020 *	3V / 5V	-20~+70	SPI & Parallel	LED	1x20PIN
	114	BGB16064-02	COB	116.00x46.00x12.00	86.00x35.20	79.97x31.97	ST7920-0C *	3V / 5V	-20~+70	SPI & Parallel	LED	2x9PIN
160x128	115	BGB160128-01	COB	129.00x102.00x12.00	101.00x82.00	92.72x74.20	T6963C *	5V	-20~+70	Parallel	LED	2x11PIN
	116	BGB160128-02	COB	129.00x104.50x11.00	101.00x82.00	95.96x76.76	T6963C *	5V	-20~+70	Parallel	LED	2x11PIN
	117	BGB160128-02A	COB	129.00x104.50x11.00	101.00x82.00	92.76x74.20	SAP1024B *	5V	-20~+70	Parallel	LED	2x11PIN
	118	BGB160128-03	COB	143.00x105.00x15.50	101.00x82.00	92.76x74.20	T6963C *	5V	-20~+70	Parallel	LED	2x11PIN
192x64	119	BGB19264-01	COB	100.00x60.00x11.30	84.00x31.00	78.67x26.19	AIP31108 *	5V	-20~+70	Parallel	LED	1x20PIN
	120	BGB19264-02	COB	111.00x46.00x12.00	84.50x28.00	78.67x26.19	AIP31108 *	5V	-20~+70	Parallel	LED	1x20PIN FPC
	121	BGB19264-03	COB	120.00x62.00x9.50	100.00x37.00	95.96x31.96	AIP31108 *	5V	-20~+70	Parallel	LED	1x20PIN
	122	BGB19264-04	COB	130.00x65.00x13.50	104.00x39.00	97.49x32.46	AIP31108 *	5V	-20~+70	Parallel	LED	1x20PIN
	123	BGB19264-05	COB	130.00x65.00x13.50	104.00x39.00	97.49x32.46	ST7920-0C *	3V / 5V	-20~+70	SPI & Parallel	LED	1x19PIN
	124	BGB19264-06	COB	130.00x53.00x12.50	104.00x39.00	97.50x32.47	AIP31108 *	5V	-20~+70	Parallel	LED	1x20PIN FPC
	125	BGB19264-07	COB	120.00x62.00x12.50	104.00x39.00	97.50x32.47	AIP31108 *	5V	-20~+70	Parallel	LED	1x21PIN FPC
	126	BGB19264-07B	COB	120.00x62.00x12.50	104.00x39.00	97.50x32.47	AIP31108 *	5V	-20~+70	Parallel	LED	1x21PENFPC
240x64	127	BGB24064-02	COB	180.00x65.00x12.00	132.00x39.00	127.15x33.87	RA8822 *	5V	-20~+70	Parallel	LED	2x11PIN
	128	BGB24064-03	COB	180.00x65.00x6.50	132.00x39.00	127.15x33.87	T6963C *	5V	-20~+70	Parallel	LED	2x11PIN
240x128	129	BGB240128-01	COB	144.00x104.00x14.00	114.00x64.00	107.97x57.57	T6963C *	5V	-20~+70	Parallel	LED	1x21PIN BongDing
	130	BGB240128-02	COB	144.00x104.00x14.00	114.00x64.00	107.95x57.55	T6963C *	5V	-20~+70	Parallel	LED	1x21PIN SMT
	131	BGB240128-02A	COB	144.00x104.00x14.00	114.00x64.00	107.97x57.57	T6963C *	5V	-20~+70	Parallel	LED	1x34PIN
	132	BGB240128-02B	COB	144.00x104.00x12.00	114.00x64.00	107.97x57.57	T6963C *	5V	-20~+70	Parallel	LED	1x21PIN
	133	BGB240128-03	COB	144.00x104.00x12.00	114.00x64.00	107.97x57.57	T6963C *	5V	-20~+70	Parallel	LED	1x21PIN 1x22PIN
	134	BGB240128-03A	COB	144.00x104.00x12.00	114.00x64.00	107.97x57.57	T6963C *	5V	-20~+70	Parallel	LED	1x21PIN 2x10PIN
	135	BGB240128-03B	COB	144.00x104.00x12.00	114.00x64.00	107.97x57.57	SAP1024 *	5V	-20~+70	Parallel	LED	1x20PIN 2x10PIN
	136	BGB240128-04	COB	144.00x104.00x12.00	114.00x64.00	107.97x57.57	RA8822 *	5V	-20~+70	Parallel	LED	1x22PIN
	137	BGB240128-05	COB	120.00x73.00x12.50	93.00x48.00	79.17x42.21	RA6963 *	5V	-20~+70	Parallel	LED	1x21PIN
	138	BGB240128-06	COB	154.00x84.00x12.00	114.00x64.00	107.97x57.57	T6963C *	5V	-20~+70	Parallel	LED	2x10PIN
240x160	139	BGB240160-01	COB	143.00x96.80x11.80	104.00x79.40	95.97x68.77	BRAK / WITHOUT	5V	-20~+70	-	LED	1x14PIN
	140	BGB320240-01	COB	160.00x109.00x11.00	122.00x92.00	115.17x86.37	RA8835 *	5V	-20~+70	Parallel	LED	1x20PIN
320x240	141	BGB320240-02	COB	160.00x109.00x11.00	122.00x92.00	115.17x86.37	RA8835 *	5V	-20~+70	Parallel	LED	1x20PIN 1x16PIN
	142	BGB320240-03	COB	139.00x100.00x12.50	103.00x79.00	95.97x71.97	RA8835 *	5V	-20~+70	Parallel	LED	1x20PIN
	143	BGB320240-04	COB	139.00x100.00x12.50	103.00x79.00	95.97x71.97	RA8835 *	5V	-20~+70	Parallel	LED	1x20PIN 1x20PIN FPC
	144	BGB320240-05A	COB	139.00x100.00x12.50	103.00x79.00	95.97x71.97	RA8835 *	5V	-20~+70	Parallel	LED	1x22PIN
	145	BGB320240-05B	COB	139.00x100.00x12.50	103.00x79.00	95.97x71.97	RA8835 *	5V	-20~+70	Parallel	CCFL	1x22PIN
	146	BGB320240-06	COB	160.00x109.00x12.00	122.00x92.00	115.17x86.37	RA8835 *	5V	-20~+70	Parallel	LED	1x14PIN / 1x20PIN / 1x24PIN
	147	BGB320240-06A	COB	160.00x109.00x12.00	122.00x92.00	115.17x86.37	RA8835 *	5V	-20~+70	Parallel	LED	1x14PIN / 1x20PIN / 1x24PIN
	148	BGB320240-06B	COB	160.00x109.00x12.00	122.00x92.00	115.17x86.37	RA8835 *	5V	-20~+70	Parallel	CCFL	1x14PIN / 1x20PIN / 1x24PIN

* lub odpowiednik
or equivalent

STANDARDOWE MODUŁY COG LCD BLAZE DISPLAY

A PART OF STANDARD COG LCD MODULES OF BLAZE DISPLAY

Format wyświetlania Display Format	Nr No.	Symbol produktu Part Number	Obudowa Tech.	Tryb wyświetlania Display Mode	Struktura Structure	Rozmiar obudowy (Dł. xSz. xWys., mm) Outline size (LxWxH, mm)	Obszar wyświetlania (Dł. xSz. xWys., mm) Viewing Area (LxW, mm)	Sterownik ukł. scal. Controller IC	Zakres temp. (°C) Top (°C)	Interfejs Interface	Podświetlenie Backlight
16x1	1	BGG1601-01	COG	FSTN/Grey/P	COG+IC+BL+PIN	70.00x20.00x5.30	67.00x11.00	ST7032-0D-G	-10~+60	SPI	Białe White
	2	BCG1602-04	COG	FSTN/Grey/P	LCD+IC+FPC+BL	102.00x34.00x2.80	98.00x24.00	ST7032I	-20~+70	IIC	Bez podśw. Without
24x2	3	BGG2402-01	COG	FSTN/Grey/P	COG+IC+FPC+BL	109.00x29.00x7.80	96.30x19.60	ST7525	-20~+70	Parallel	Białe White
	4	BCG2402-04	COG	FSTN/Grey/P	LCD+IC+FPC+BL	109.00x29.00x6.80	96.30x19.60	ST7525	-20~+70	Parallel	Białe White
	5	BCG2402-05	COG	FSTN/Grey/P	LCD+IC+FPC+BL	109.00x27.00x6.80	96.30x19.60	ST7525	-20~+70	Parallel	Białe White
120x17	6	BGG12017-01	COG	STN/Blue/N	COG+IC+FPC+BL+PCB	124.10x26.00x10.00	101.70x15.40	NT7538H	-20~+70	SPI	Białe White
122x32	7	BGG12232-01	COG	STN/Blue/N	COG+IC+FPC+BL+PCB	83.40x28.20x8.50	68.40x19.70	ST7567	-20~+70	SPI	Białe White
128x32	8	BGG12832-01	COG	FSTN/Grey/P	LCD+IC+FPC+BL	52.00x27.50x3.10	46.00x16.00	UC1705	-10~+60	SPI	-
	9	BGG12832-02	COG	FSTN/Grey/P	LCD+IC+FPC	35.00x16.30x1.70	32.00x9.80	ST7567	0~+50	SPI	-
	10	BGG12832-03	COG	FSTN/Grey/P	LCD+IC+FPC+BL	52.00x27.50x3.10	46.00x16.00	UC1705	-10~+60	SPI	Białe White
128x64	11	BGG12864-01	COG	STN/Y-G/P	LCD+IC+FPC	49.00x58.00x2.80	46.00x27.00	ST7565R	-10~+60	SPI & Parallel	-
	12	BGG12864-02	COG	STN/Y-G/P	LCD+IC+FPC	33.20x71.90x2.80	30.20x28.60	ST7565R	-10~+60	SPI & Parallel	-
	13	BGG12864-03	COG	STN/Y-G/P	LCD+IC+FPC	69.10x74.50x2.80	65.50x38.00	NT7538	-10~+60	SPI & Parallel	-
	14	BGG12864-04	COG	FSTN/Grey/P	LCD+IC+PIN+BL	43.20x35.70x6.30	40.00x25.00	ST7567	-20~+70	SPI	Niebieskie Blue
	15	BGG12864-05	COG	FSTN/Grey/P	LCD+IC+PIN-BL	43.20x35.70x6.30	40.00x25.00	ST7567	-20~+70	SPI	Białe White
	16	BGG12864-06	COG	FSTN/Grey/P	LCD+IC+FPC+BL	35.00x36.00x4.20	29.00x16.35	ST7567	-20~+70	SPI	Białe White
	17	BGG12864-07	COG	FSTN/Grey/P	LCD+IC+FPC+BL	80.00x138.00x9.70	70.70x38.80	ST7567	-20~+70	SPI & Parallel	Białe White
	18	BGG12864-08	COG	FSTN/Grey/P	LCD+IC+FPC+BL	55.20x88.10x4.00	45.20x27.00	ST7567	-20~+70	SPI & Parallel	Białe White
	19	BGG12864-09	COG	FSTN/Grey/P	LCD+IC+FPC+BL	77.40x52.40x9.10	70.00x40.00	ST7565R	-20~+70	SPI & Parallel	Białe White
	20	BGG12864-10	COG	STN/Y-G/P	LCD+IC+FPC+BL	65.00x39.55x4.90	53.60x28.60	ST7567	-10~+60	SPI	Zielone Green
	21	BGG12864-11	COG	FSTN/Grey/P	LCD+IC+FPC+BL+BZF+PCB	93.00x70.00x12.90	71.60x38.80	ST7565R	0~+50	SPI	Niebieskie Blue
	22	BGG12864-12	COG	STN/Y-G/P	LCD+IC+FPC+BL	65.00x39.55x4.90	53.60x28.60	ST7567	-10~+60	SPI & Parallel	Zielone Green
	23	BGG12864-13	COG	STN/Y-G/P	LCD+IC+FPC+BL+BZF+PCB	114.90x75.00x10.30	66.00x38.00	ST7565R	-10~+60	SPI	Zielone Green
	24	BGG12864-14	COG	STN/Y-G/P	LCD+IC+FPC+BL+BZF+PCB	93.00x57.00x10.30	66.00x38.00	ST7565R	-10~+60	SPI	Zielone Green
	25	BGG12864-15	COG	STN/Y-G/P	LCD+IC+FPC+BL	36.80x38.80x4.52	32.00x29.00	ST7567	-10~+60	SPI	Zielone Green
	26	BGG12864-16	COG	STN/Y-G/P	LCD+IC+FPC	77.00x48.00x2.80	73.00x39.00	ST7567	-10~+60	SPI & Parallel	-
	27	BGG12864-17	COG	STN/Y-G/P	LCD+IC+FPC+BL+BZF+PCB	111.00x55.00x2.80	71.70x38.80	ST756R	-10~+60	SPI	Zielone Green
	28	BGG12864-18	COG	STN/Y-G/P	LCD+IC+FPC+BL	65.00x61.95x4.90	53.60x28.60	ST7567	-10~+60	SPI	Zielone Green
	29	BGG12864-19	COG	STN/Y-G/P	LCD+IC+FPC+BL	65.00x39.55x4.90	53.60x28.60	ST7567	-10~+60	SPI	Zielone Green
	30	BGG12864-20	COG	STN/Blue/N	LCD+IC+FPC+BL+PCB	76.20x52.50x7.10	53.60x28.60	ST7567	-20~+70	SPI	Białe White
	31	BGG12864-21	COG	STN/Y-G/P	LCD+IC+FPC+BL+BZF+PCB	95.00x54.50x10.00	65.40x38.00	ST7565R	-10~+60	SPI	Zielone Green
	32	BGG12864-22	COG	STN/Y-G/P	LCD+IC+FPC+BL+PCB	71.30x57.20x6.30	66.00x38.00	ST7565R	-10~+60	Parallel	Zielone Green
	33	BGG12864-23	COG	STN/Blue/N	LCD+IC+FPC+BL	65.00x61.95x4.90	53.60x28.60	ST7567	-10 ~+60	SPI	Białe White

Format wyświetlania Display Format	Nr No.	Symbol produktu Part Number	Obudowa Tech.	Tryb wyświetlania Display Mode	Struktura Structure	Rozmiar obudowy (Dł.xSz.xWys., mm) Outline size (LxWxH, mm)	Obszar wyświetlania (Dł.xSz.xWys., mm) Viewing Area (LxW, mm)	Sterownik ukł. scal. Controller IC	Zakres temp. (°C) Top (°C)	Interfejs Interface	Podświetlenie Backlight
128x64	34	BGG12864-24	COG	STN/Y-G/P	LCD+IC+FPC+BL	78.00x68.00x5.30	71.70x38.80	ST7565R	-10~+60	Parallel & SPI	Zielone Green
	35	BGG12864-25	COG	STN/Blue/N	LCD+IC+FPC+BL+BZF+PCB	92.00x53.00x9.80	65.40x38.80	ST7565R	-10~+60	SPI	Białe White
	36	BGG12864-26	COG	STN/Y-G/P	LCD+IC+FPC+BL+BZF+PCB	106.20x52.10x10.00	65.40x38.80	ST7565R	0~+50	Parallel & SPI	Zielone Green
	37	BGG12864-27	COG	STN/Blue/N	LCD+IC+FPC+BL+BZF+PCB	77.30x64.00x8,70	70.60x37.70	ST7565R	-10~+60	Parallel & SPI	Białe White
	38	BGG12864-28	COG	STN/Y-G/P	LCD+IC+FPC+BL+BZF+PCB	95.00x54.50x10.00	65.40x38.80	ST7565R	-10~+60	SPI	Niebieskie Blue
	39	BGG12864-29	COG	STN/Y-G/P	LCD+IC+FPC+BL	81.00x59.00x5.30	66.00x28.00	ST7567	-10~+60	SPI	Niebieskie Blue
	40	BGG12864-30	COG	STN/Y-G/P	LCD+IC+FPC+BL+BZF+PCB	101.00x59.00x10.30	66.00x38.00	ST7565R	-10~+60	Parallel & SPI	Zielone Green
	41	BGG12864-31	COG	FSTN/Grey/P	LCD+IC+FPC+BL	54.60x42.20x4.50	50.60x31.00	ST7565P	-10~+60	Parallel & SPI	RGB
	42	BGG12864-32	COG	FSTN/Grey/P	LCD+IC+FPC+BL+BZF+PCB	106.15x74.30x12.90	71.60x38.80	ST7565R	-20~+70	SPI	Zielone Green
	43	BGG12864-33	COG	FSTN/Grey/P	LCD+IC+FPC+BL	69.30x44.05x11.40	64.00x33.00	NT7538H	-30~+80	SPI	Białe White
	44	BGG12864-34	COG	FSTN/Grey/P	LCD+IC+FPC+BL	74.00x52.50x7.60	68.00x40.50	NT7538H	-20~+70	Parallel & SPI	Białe White
	45	BGG12864-35	COG	FSTN/Grey/P	LCD+IC+FPC+BL	36.30x24.00x3.00	29.00x16.35	ST7567	-10~+60	SPI	-
	46	BGG12864-36	COG	FSTN/Grey/P	LCD+IC+FPC+BL	57.60x40.50x5.00	53.60x28.60	ST7567	-10~+60	Parallel	Niebieskie Blue
	47	BGG12864-37	COG	FSTN/Grey/P	LCD+IC+FPC+BL	71.90x52.40x9.30	65.40x39.00	ST7567	-20~+70	Parallel & SPI	Białe White
	48	BGG12864-38	COG	FSTN/Grey/P	LCD+IC+FPC+BL	16.00x30.50x2.70	14.00x23.50	UC1604C	-10~+60	SPI	Białe White
	49	BGG12864-39	COG	FSTN/Grey/P	LCD+IC+FPC+BL	80.00x54.00x9.70	70.70x38.80	ST7565V-G	-20~+70	Parallel & SPI	Niebieskie Blue
	50	BGG12864-40	COG	FSTN/Grey/P	LCD+IC+FPC	28.58x19,50x1.70	26.58x14.86	ST7567	-10~+60	SPI	-
	51	BGG12864-41	COG	FSTN/Grey/P	LCD+IC+FPC	47.60x37.00x2.00	44.00x29.00	IST3004	-10~+60	Parallel & SPI	-
	52	BGG12864-42	COG	FSTN/Grey/P	LCD+IC+FPC	43.60 x31.70 x2.80	41.20x25.20	ST7567	-20~+70	SPI	-
	53	BGG12864-43	COG	FSTN/Grey/P	LCD+IC+FPC	31.00x22.50x1.70	29.00x16.35	ST7567	-10~+60	SPI	-
	54	BGG12864-44	COG	FSTN/Grey/P	LCD+IC+FPC+BL	80.00x54.00x9.70	70.70x38.80	ST7565V-G	-20~+70	Parallel & SPI	Białe White
	55	BGG1286445	COG	DFSTN/N	LCD+IC+FPC+BL	37.10x29.90x6.90	33.70x21.80	ST7567	0~+50	SPI	Białe White
	56	BGG12864-46	COG	DFSTN/N	LCD+IC+FPC+BL	65.00x43.50x7.50	59.00x32.00	ST7565P	-20~+70	SPI	Białe White
	57	BGG12864-47	COG	FSTN/Grey/P	LCD+IC+FPC+BL	77.40x52.40x9.10	70.00x40.00	ST7565R	-20~+70	SPI	Białe White
	58	BGG12864-48	COG	FSTN/Grey/P	LCD+IC+FPC+BL	42.00x31.60x2.60	38.00x24.30	ST7567	-20~+70	SPI	Białe White
	59	BGG1286449	COG	FSTN/Grey/P	LCD+IC+FPC+BL	48.50x28.15x3.10	39.50x20.20	ST7567	-20~+70	SPI	Białe White
	60	BGG12864-50	COG	FSTN/Grey/P	LCD+IC+FPC	77.00x48.00x2.80	73.00x39.00	IST3004	-20~+70	Parallel & SPI	-
	61	BGG12864-51	COG	STN/Y-G/P	LCD+IC+FPC+BL	76.50x43.00x9.10	56.30x32.50	ST7565R	-20~+70	SPI	Żółto-Ziel. Y-G
	62	BGG12864-52	COG	STN/Y-G/P	LCD+IC+FPC+BL	36.80x38.80x4.10	7.200x29.00	ST7567	-10~+60	SPI	Zielone Green
63	BGG12864-53	COG	STN/Y-G/P	LCD+IC+FPC+BL+BZF+PCB	120.00x64.00x13.60	70.60x39.30	ST7565P	-20~+70	Parallel & SPI	Zielone Green	
64	BGG12864-54	COG	STN/Y-G/P	LCD+IC+FPC+BL+BZF+PCB	93.00x70.00x10.10	72.00x39.50	ST7565R	-20~+70	Parallel & SPI	Białe White	
65	BGG12864-55	COG	STN/Y-G/P	LCD+IC+PIN+BL	77.40x52.40x6.50	70.00x40.00	ST7565R	-20~+70	Parallel & SPI	Białe White	
66	BGG12864-56	COG	STN/Y-G/P	LCD+IC+FPC+BL	74.00x39.50x5.60	53.60x28.60	ST7567	-10~+60	SPI	Zielone Green	
67	BGG12864-57	COG	STN/Y-G/P	LCD+IC+FPC+BL	65.30x40.70x5.85	53.60x28.60	ST7567	-10~+60	SPI	Białe White	
68	BGG12864-58	COG	STN/Y-G/P	LCD+IC+FPC+BL+BZF+PCB	100.00x60.44x12.90	71.60x38.80	ST7565R	-20~+70	Parallel & SPI	Zielone Green	
69	BGG12864-59	COG	STN/Grey/P	LCD+IC+FPC+BL	54.60x42.20 x4.00	50.60x31.00	UC1601X	-20~+70	Parallel & SPI	Białe White	

Format wyświetlania Display Format	Nr No.	Symbol produktu Part Number	Obudowa Tech.	Tryb wyświetlania Display Mode	Struktura Structure	Rozmiar obudowy (Dł. x Sz. x Wys., mm) Outline size (L x W x H, mm)	Obszar wyświetlania (Dł. x Sz. x Wys., mm) Viewing Area (L x W, mm)	Sterownik ukł. scal. Controller IC	Zakres temp. (°C) Top (°C)	Interfejs Interface	Podświetlenie Backlight
128x64	70	BGG12864-60	COG	STN/Y-G/P	LCD+IC+FPC+BL	79.05x39.50x8.04	53.60x28.60	ST7567	-10~+60	SPI	Zielone Green
	71	BGG12864-61	COG	STN/Y-G/P	LCD+IC+FPC+BL	78.00x37.40x5.30	53.40x25.20	ST7567	-10~+60	SPI	Zielone Green
	72	BGG12864-62	COG	STN/Y-G/P	LCD+IC+FPC+BL	65.00x39.55x4.90	53.60x28.60	ST7567	-10~+60	SPI	Białe White
	73	BGG12864-63	COG	STN/Y-G/P	LCD+IC+FPC+BL	89.70x49.80x6.00	71.00x37.50	ST7567	-20~+70	SPI	Białe White
	74	BGG12864-64	COG	STN/Y-G/P	LCD+IC+FPC+BL	62.50x29.30x6.10	59.50x22.50	ST7567	-20~+70	SPI	Czerw+Żółte Red+Yellow
	75	BGG12864-65	COG	STN/Grey/P	LCD+IC+FPC+BL	89.70x49.80x6.00	59.50x22.50	ST7567	-20~+70	SPI	Białe White
	76	BGG12864-66	COG	STN/Y-G/P	LCD+IC+FPC+BL	41.00x33.10x3.00	59.50x22.50	UC1701x	-20~+70	SPI	Białe White
	77	BGG12864-67	COG	STN/Y-G/P	LCD+IC+FPC+BL	79.05x39.50x8.04	59.50x22.50	ST7567	-10~+60	SPI	Niebieskie Blue
	78	BGG12864-68	COG	STN/Y-G/P	LCD+IC+FPC+BL	65.30x40.70x5.85	59.50x22.50	ST7567	-10~+60	SPI	Białe White
	79	BGG12864-69	COG	STN/Y-G/P	LCD+IC+FPC+BL+PCB	96.80x48.60x8.00	59.50x22.50	ST7567	-10~+60	SPI	Zielone Green
	80	BGG12864-70	COG	STN/Blue/N	LCD+IC+FPC+BL	89.70x49.80x6.00	59.50x22.50	ST7565R	-20~+70	Parallel & SPI	Białe White
	81	BGG12864-71	COG	FSTN/Grey/P	LCD+IC+FPC+BL	80.00x37.00x5.30	59.50x22.50	ST7567	-10~+60	SPI	Białe White
	82	BGG12864-72	COG	STN/Y-G/P	LCD+IC+FPC	57.20x42.50x2.80	59.50x22.50	ST7567	-20~+70	Parallel & SPI	-
	83	BGG12864-73	COG	STN/Y-G/P	LCD+IC+FPC+BL	79.05x35.22x8.04	53.40x25.20	ST7567	-10~+60	SPI	Zielone Green
	84	BGG12864-74	COG	STN/Y-G/P	LCD+IC+FPC+BL	74.00x43.50x5.80	62.0x31.50	ST7567	-20~+70	SPI	Zielone Green
	85	BGG12864-75	COG	STN/Y-G/P	LCD+IC+FPC+BL	79.05x39.50x8.04	53.60x28.60	ST7567	-20~+70	Parallel	Zielone Green
	86	BGG12864-76	COG	STN/Y-G/P	LCD+IC+FPC+BL	74.00x43.50x5.80	62.00x31.50	ST7567	-20~+70	SPI	Zielone Green
	87	BGG12864-77	COG	STN/Grey/P	LCD+IC+FPC+BL	66.00x45.00x7,70	60.00x32.60	NT7538H	-20~+70	Parallel & SPI	Białe White
	88	BGG12864-78	COG	STN/Y-G/P	LCD+IC+FPC+BL	80.00x37.00x5.30	66.00x28.00	ST7567	-10~+60	SPI	Zielone Green
	89	BGG12864-79	COG	STN/Y-G/P	LCD+IC+FPC+BL	79.05x39.50x8.04	53.60x28.60	ST7567	-10~+60	SPI	Zielone Green
	90	BGG3630-01	COG	STN/Grey/P	LCD+IC+FPC+BL	64.40x39.00x4.50	58.0x28.00	ST7567 *	-20~+70	Parallel	Białe White
91	BGG3663-01	COG	FSTN/Grey/P	LCD+IC+FPC+BL	69.30x44.05x13.05	64.00x33.00	NT7538H *	-20~+70	Parallel	Białe White	
92	BGG12864-80	COG	FSTN/Grey/P	LCD+IC+PIN+BL	77.40x52.40x6.50	70.00x40.00	ST7565R *	-20~+70	Parallel	Białe White	
93	BGG12864-81	COG	FSTN/Grey/P	LCD+IC+PIN+BL	90.70x59.00x6.50	83.30x46.60	ST7565R *	-20~+70	Parallel	Białe White	
128x88	94	BGG12888-01	COG	FSTN/Grey/P	LCD+IC+FPC+BL	58.80x52.80x8.00	53.00x35.00	UC1617	-30~+80	IIC	Białe White
128x128	95	BGG128128-01	COG	FSTN/Grey/P	LCD+IC+FPC	43.50x42.00x1.70	40.50x33.50	ST7571	-20~+70	Parallel & SPI	Białe White
	96	BGG128128-05	COG	FSTN/Black/N	LCD+IC+FPC+BL	40.00x40.20x2.20	31.85x31.85	ST7571	-20~+70	SPI	Białe White
131x64	97	BGG13164-01	COG	FSTN/Grey/P	LCD+IC+FPC+BL +Plastic+PCB	113.70x80.92x19.00	82.00x36.20	ST7565P	-20~+70	Parallel	Białe White
132x29	98	BGG13229-01	COG	STN/Blue/N	LCD+IC+FPC+BL+PCB	133.00x33.20x13.00	110.00x22.00	NY7538	-20~+70	SPI	Białe White
132x32	99	BGG13264-01	COG	FSTN/Grey/P	LCD+IC+FPC	34.50x15.00x1.70	31.90x9.50	ST7567	-10~+60	SPI	-
	100	BGG13264-02	COG	FSTN/Grey/P	LCD+IC+FPC	34.50x15.00x1.70	31.90x9.50	ST7567	-10~+60	SPI	-
	101	BGG13264-03	COG	FSTN/Grey/P	LCD+IC+FPC	34.50x15.00x1.70	31.90x9.50	ST7567	-10~+60	SPI	-
132x52	102	BGG13252-01	COG	FSTN/Grey/P	LCD+IC+FPC+BL	85.20x44.40x6.70	73.00x28.00	ST7567	-20 - +70	SPI	Białe White
132x58	103	BGG13258-01	COG	FSTN/Grey/P	LCD+IC+FPC+BL	90.00x46.00x7.50	74.00x33.00	ST7567	-20~+70	SPI	Białe White
132x64	104	BGG13258-01	COG	STN/Y-G/P	LCD+IC+FPC	57.00x36.90x2.80	54.00x28.10	ST7567	-20~+70	SPI	-
	105	BGG13258-01	COG	STN/Y-G/P	LCD+IC+FPC	57.00x36.90x2.80	54.00x28.10	ST7567	-30~+80	SPI	-

Format wyświetlania Display Format	Nr No.	Symbol produktu Part Number	Obudowa Tech.	Tryb wyświetlania Display Mode	Struktura Structure	Rozmiar obudowy (Dł.×Sz.×Wys., mm) Outline size (L×W×H, mm)	Obszar wyświetlania (Dł.×Sz.×Wys., mm) Viewing Area (L×W, mm)	Sterownik ukl. scal. Controller IC	Zakres temp. (°C) Top (°C)	Interfejs Interface	Podświetlenie Backlight
160×48	106	BGG16048-01	COG	DFSTN/N	LCD+IC+FPC+BL	62.70×20.80×2.55	52.70×17.00	UC1604C	-20~+70	SPI	Białe White
160×120	107	BGG160120-01	COG	FSTN/Grey/P	LCD+IC+FPC+BL	51.96×47.00×8.00	43.76×33.80	UC1618T	-20~+70	Parallel	Białe White
160×122	108	BGT160122-01	TAB	STN/Y-G/P	LCD+TAB+FPC+BL+PCB	60.10×57.50×5.20	37.50×48.40	NT7701H- TAB18A	-10~+60	-	Pomarańcz. Orange
160×160	109	BGG160160-01	COG	FSTN/Grey/P	LCD+IC+FPC+BL+BZF+PCB	92.00×92.00×9.00	60.00×60.00	UC1698U	-20~+70	Parallel	Białe White
	110	BGG160160-02	COG	FSTN/Grey/P	LCD+IC+FPC+BL+BZF+PCB	83.80×76.50×10.00	60.00×60.00	UC1698U	-20~+70	Parallel	Białe White
	111	BGG160160-03	COG	FSTN/Grey/P	LCD+IC+FPC+BL+BZF+PCB	77.70×72.80×10.00	60.00×60.00	UC1698U	-20~+70	Parallel	Białe White
	112	BGG160160-04	COG	FSTN/Grey/P	LCD+IC+FPC+BL+BZF+PCB	83.80×76.50×8.50	60.00×60.00	UC1698U	-30~+80	Parallel	Białe White
	113	BGG160160-05	COG	STN / Grey / P	LCD+IC+FPC+BL	79.00×68.00×7.00	69.00×57.00	ST7586S	-20~+70	Parallel & SPI	Białe White
170×64	114	BGG17064-01	COG	FSTN/Grey/P	LCD+IC+FPC+BL+PCB	56.00×29.80×4.30	50.00×19.90	ST7565R	-20~+70	Parallel	Białe White
192×64	115	BGG19264-01	COG	FSTN/Grey/P	LCD+IC+FPC+BL	58.00×24.40×3.20	51.00×17.20	UC1906C	-20~+70	HC&SPI	-
	116	BGG19264-02	COG	STN/Blue/N	LCD+IC+FPC+BL+BZF+PCB	100.00×48.00×11.50	84.00×32.00	IST3020	-20~+70	SPI	Białe White
212×64	117	BGG21264-01	COG	FSTN/Grey/P	LCD+IC+FPC+BL	124.00×46.50×12.50	108.00×35.00	UC1611S	-20~+70	Parallel & SPI	Białe Nieb. White Blue
	118	BGG24064-02	COG	FSTN/Green/P	LCD+IC+FPC+BL	107.20×45.70×12.01	100.00×34.50	UC1638C	-20~+70	SPI	Zielone Green
240×120	119	BGG240120-01	COG	FSTN/Grey/P	LCD+IC+FPC+BL+PCB	84.00×50.00×9.00	72.00×37.00	UC1608U	-20~+70	Parallel	Białe White
240×128	120	BGG240128-01	COG	FSTN/Grey/P	LCD+IC+FPC+BL	111.28×68.74×2.80	94.18×56.74	UC1608U	-20~+70	Parallel & SPI	Białe White
	121	BGG240128-02	COG	FSTN/Grey/P	LCD+IC+FPC+BL	104.00×65.80×5.80	97.30×53.90	UC16Q8U	-20~+70	Parallel & SPI	Białe White
240×160	122	BGG240160-01	COG	STN/Blue/N	LCD+IC+FPC+BL+BZF+PCB	93.00×64.20×9.30	78.50×47.50	ST7586S	-20~+70	Parallel & SPI	Białe White
	123	BGG240160-03	COG	STN/Blue/P	LCD+IC+FPC+BL	85.00×62.80×4.20	77.58×51.60	ST75256 *	-20~+70	Parallel	Białe White

* lub odpowiednik
or equivalent

KATEGORIE PRODUKTÓW

PRODUCT CATEGORIES

Jako rzetelny projektant i producent wyświetlaczy LCD, Blaze Display oferuje rozwiązania w zakresie LCD, takie jak: monochromatyczne panele LCD z technologią TN, HTN, STN, FSTN, DFSTN i moduły LCD z technologią COB, COG, TAB, SMT, wyświetlacze CTFT, OLED, LED backlight, tuby wideo LED i ekrany dotykowe. Oferta obejmuje najlepsze techniczne i komercyjne rozwiązanie do każdego wymagania systemu wyświetlaczy, włącznie ze standardowymi i dostosowanymi wersjami produktów.

As a reliable LCD display designer and manufacturer, Blaze Display provides LCD display solutions including monochrome LCD panel with TN, HTN, STN, FSTN, DFSTN technology and LCD module with COB, COG, TAB, SMT technology, Color TFT displays, OLED displays, LED backlight, LED digital-tube and touch screen. We can offer customer with the best technical and commercial solution to any display system requirement including standard and customized design products.



technologia COB
COB technology



panel LCD
LCD panel



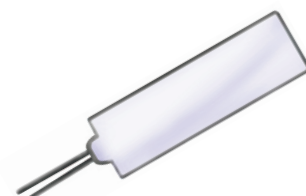
technologia COG
COG technology



technologia VATN
VATN technology



wyświetlacz TFT
TFT display



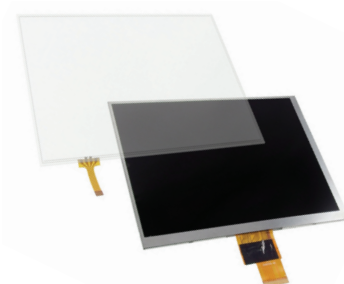
podświetlenie LED
LED backlight



wyświetlacz OLED
OLED display



tuby wideo LED
LED digital-tube



ekran dotykowy
touch screen

O FIRMIE BLAZE DISPLAY

ABOUT BLAZE DISPLAY

- » jest projektantem, badaczem i producentem wyświetlaczy LED z ponad 30-letnim doświadczeniem;
- » jest właścicielem:
 - 3 fabryk;
 - 5 automatycznych linii produkcyjnych;
 - warsztatu 10000m²;
- » zatrudnia:
 - 73 inżynierów;
 - ponad 800 pracowników;
- » posiada:
 - certyfikaty ISO 9001 : 2000 i RoHS ze standardem wojskowej normy Stanów Zjednoczonych: MIL-STD-810G, z prawami do importu i eksportu
- » LCD Display design, research, manufacture
- » 3 Factories
- » 5 Automatic Production Lines
- » 30+ Years' Experience
- » 73 Engineers
- » 800 + Workers
- » 10 000m² workshop
- » ISO 9001:2000 & RoHS
- » with US Military Standard: MIL-STD-810G
- » with Import & Export Right

- | | |
|-------------|-----------------------------------------------------------------------------------------------------------------------------------------------------------------------------------------------------------------------------------------------------------------------------|
| 1982 | Rozpoczęcie działalności w dziedzinie rozwoju technologii wyświetlaczy.
Set up as a display technology researcher. |
| 1986 | Pierwsza linia produkcyjna wyświetlaczy LCD w Chinach.
As the first LCD Display production line to put into mass-production in China. |
| 1997 | Wprowadzenie nowej linii produkcyjnej przy podstawowej wielkości szkła ITO 14×16 cala.
Set up one new production line with basic size of 14×16 inch ITO Glass. |
| 1998 | Przełom w technologii STN, rozpoczęcie produkcji na masową skalę i otrzymanie nagrody przedsiębiorstwa wykorzystującego zaawansowaną technologię.
Has got new breakthrough in STN technology and starting to mass-production and was rewarded as the Hi-tech enterprise. |
| 2000 | Z powodzeniem opracowano technologię COG i rozpoczęto produkcję na masową skalę.
Successfully developed COG technology and start mass-production. |
| 2003 | Członkostwo w krajowym projekcie „863” - badanie techniki OLED i uzyskanie 4 patentów.
As the important member in the national project “863” - OLED Technique research, and gained 4 patents. |
| 2005 | Z powodzeniem opracowano moduły CSTN.
Successfully developed the Color-STN (CSTN) Module products. |
| 2006 | Z powodzeniem opracowano moduły TFT.
Successfully developed the TFT Module products. |
| 2008 | Przemianowanie na “Blaze Display Technology Co., Ltd.”
Renamed “Blaze Display Technology Co., Ltd.” |
| 2009 | Z powodzeniem opracowano technologię VA i rozpoczęto produkcję na masową skalę.
Successfully developed VA technology and started mass production. |
| 2010 | Przyznanie certyfikatu ISO9001:2000.
Awarded ISO9001:2000 certification. |
| 2011 | Pomyślne przejście testów RoHS przez panele i moduły LCD, przyznanie im certyfikatu.
LCD Panel and Module passed RoHS testing and awarded certification. |
| 2012 | Założenie fabryki Jiangxi LED backlight.
Set up Jiangxi LED backlight factory. |
| 2013 | Z powodzeniem opracowano panele LCD które mogły pracować w temperaturze poniżej -50°C do zastosowań militarnych.
Successfully developed LCD Display which could work properly under -50°C for military supplies. |
| 2014 | Uzyskanie statusu największego dostawcy wyświetlaczy LCD do dystrybutorów paliwa na rynku USA.
Became the biggest exclusive supplier of LCD Display for fuel dispenser in US market. |
| 2015 | Przygotowanie do założenia nowej fabryki w Jiangxi.
Preparation for a new factory in Jiangxi. |



Micros sp.j. W.Kędra i J.Lic
ul. E.Godlewskiego 38
30-198 Kraków

tel.: +48 12 636 95 66
fax: +48 12 636 93 99
e-mail: biuro@micros.com.pl

www.led.micros.pl
www.elektronik.micros.pl
www.micros.com.pl