

**Product Number: RG58-SMAF-SMAM-10M**  
**Product Name: Coaxial Cable**

**Index:**

- 1. Specification**
- 2. Characteristics and Reliability Test**
- 3. Mechanical Drawing**

**Product Number: RG58-SMAF-SMAM-10M**

**Product Name: Coaxial Cable**

## 1. Specification

Sample Photo	
	
A. Electrical Characteristics	
Frequency	DC 3 GHz
Impedance	50 Ohm
V.S.W.R.	$\leq 2.0$
Insertion Loss	$\leq -2.5\text{dB}$
Voltage (breakdown)	$> 500\text{V}$
B. Material & Mechanical Characteristics	
Material of Conductor	Cu
Pull Test of SMA Connector	$\geq 5\text{Kg}$
Mating Cycles	$> 500$
C. Environmental	
Operation Temperature	$- 40\text{ }^{\circ}\text{C} \sim + 65\text{ }^{\circ}\text{C}$
Storage Temperature	$- 40\text{ }^{\circ}\text{C} \sim + 80\text{ }^{\circ}\text{C}$

**Product Number: RG58-SMAF-SMAM-10M**

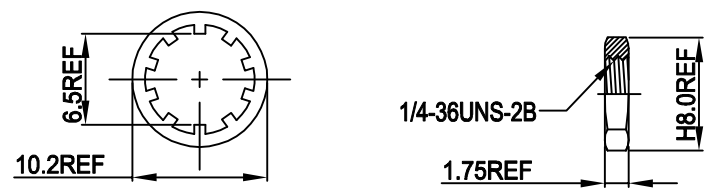
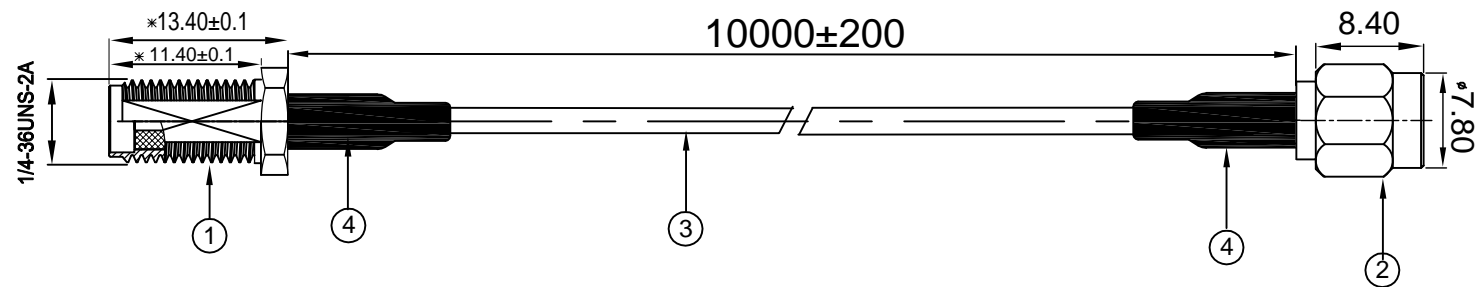
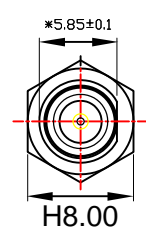
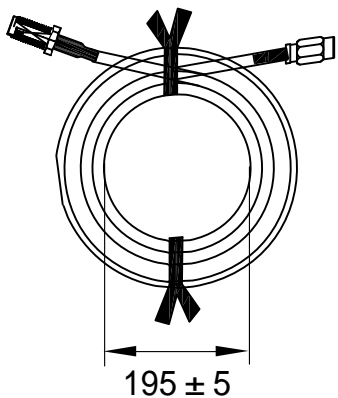
**Product Name: Coaxial Cable**

## **2. Characteristics and Reliability Test**

<b>Test Items</b>		<b>Test Condition and Procedure</b>	<b>Requirements</b>	<b>Result</b>
<b>C1</b>	<b>V.S.W.R.</b>	Set DUT on Network Analyzer; make individual calibration to test	Directive DUT specification	<b>PASS</b>
<b>C2</b>	<b>Insertion Loss</b>	Set DUT on Network Analyzer; make individual calibration to test	Directive DUT specification	<b>PASS</b>
<b>M4</b>	<b>Pull Test</b>	Holding with individual specification; force applied to axis of terminal .	1. Directive DUT specification 2. Frequency Tol.≤5%	<b>PASS</b>
<b>M6</b>	<b>Dimension</b>	Inspection of dimension, color, material, package, surface process.	Directive DUT specification	<b>PASS</b>
<b>E2</b>	<b>Salt Spray</b>	GB / T 2423.17-2008 Temp: 35°C; RH: ≥ 95%; NaCl solution: ≥ 5%;Time: 24H	1. No Visual Damage 2. Frequency Tol.≤5%	<b>PASS</b>
<b>E3</b>	<b>Temperature and Humidity Chamber</b>	GB / T 2423.3-2006 Temp: 80°C / 12 H; -40°C / 12H RH: ≥ 90%; Time: 24H	After 2 Hours Recovery 1. No Visual Damage 2. Frequency Tol.≤5%	<b>PASS</b>
<b>E5</b>	<b>Aging test</b>	GB /T 2423.2 - 2008 Temp: 80°C; Time: 24 hours	After 2 Hours Recovery 1. No Visual Damage 2. Frequency Tol.≤5%	<b>PASS</b>
<b>R1</b>	<b>RoHS</b>	With Reference to IEC 62321:2008 with flow chart	Directive RoHS 2011/65/EU	<b>PASS</b>
<b>R2</b>	<b>PFOS</b>	With Reference to USA EPA 3550C:1996 by LC/MS	Directive RoHS 2006/122/EC	<b>PASS</b>

**RoHS**  
Compatible

REV.	DESCRIPTION	DATE
△		2024-12-11



5					1
4	Hot Shrink Tube	Ø 7.0mm L=20mm	Hot Shrink Tube		1
3	Coaxial Cable	RG58 Black			1
2	SMA Male	Au Plated	Cu		1
1	SMA Female	Au Plated	Cu		1
NO	PART NAME	DESCRIPTION	Material	Part Number	Q.TY

PART NAME: RF Cable L=10M						
PART NO.: RG58-SMAF-SMAM-10M				DATE:		
APPROVED BY	CHECKED BY	DESIGNED BY		Tolerance		
LQ		DJC		UNITS: mm	X.X ±0.50	
2024-12-11		2024-12-11		SCALE: 1/1	X.XX ±0.15	
			REVISION: A	X° ±3°		