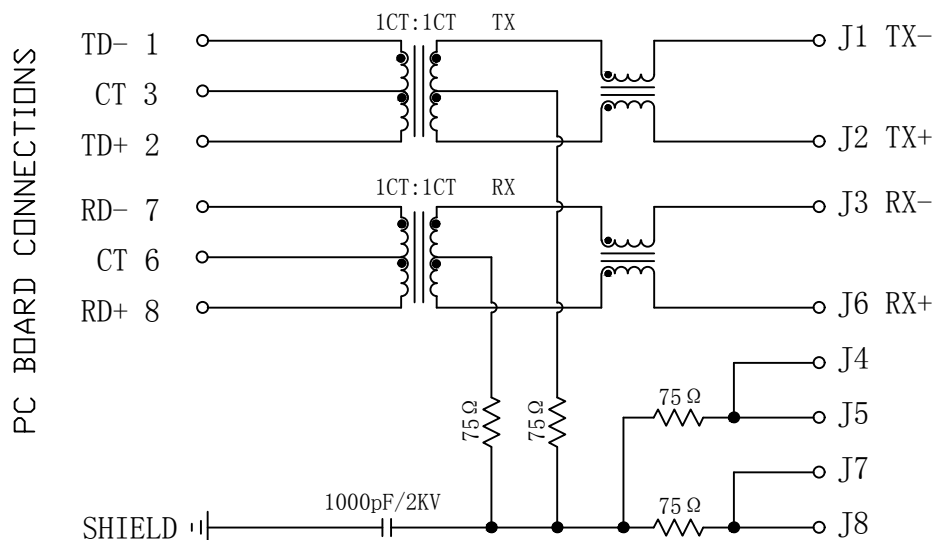


Schematic:

REV.	ECN NO.	DESCRIPTION	DATE	APPD
A	REL		11/07/2008	



RJ45 CONNECTOR

ELECTRICAL SPECIFICATIONS @25°C

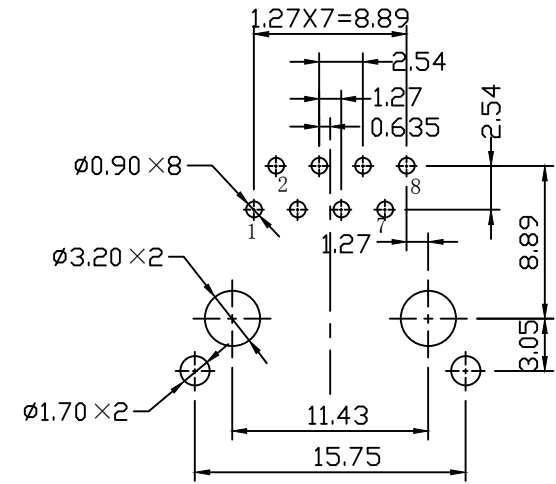
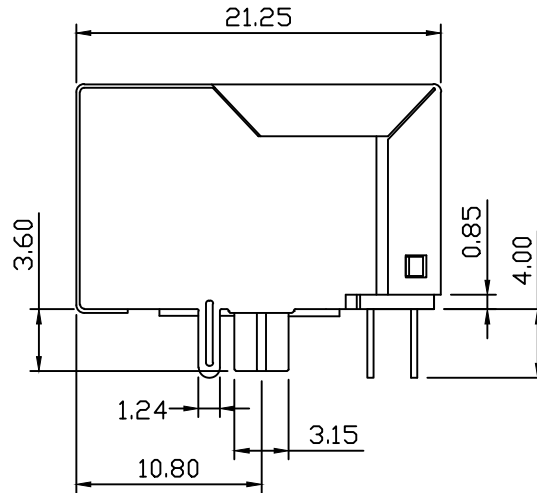
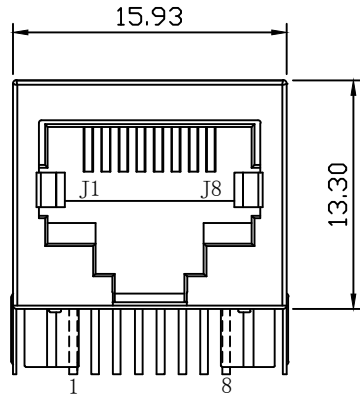
- Turn Ratio(±2%):  
TX=1CT:1CT      RX=1CT:1CT
- Inductance OCL: 350uH MIN  
@ 100KHz/0.1V, 8mA DC Bias
- Insertion Loss:  
1-100MHz: -1.0dB MAX
- Return Loss(dB MIN):  
1-30MHz: -18      40MHz: -16  
50MHz: -14      60-80MHz: -12  
100MHz: -10
- Cross talk:  
-40dB MIN @ 1-30MHz  
-35dB MIN @ 30-60MHz  
-30dB MIN @ 60-100MHz
- Common Mode Rejection:  
-35dB MIN @ 1-50MHz  
-20dB MIN @ 50-100MHz
- Isolation PHY SIDE To Line SIDE : 1500Vrms
- Operating Temperature: -40°C TO +85°C.



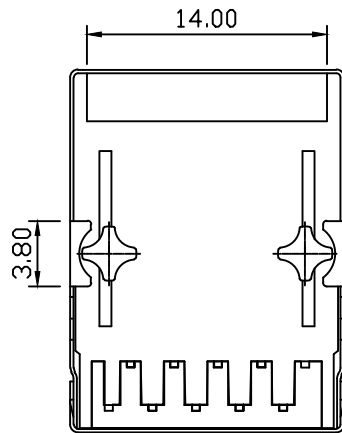
X:X ±0.30	APPD: TOM	LINK-PP INT'L TECHNOLOGY CO., LIMITED
X:XX ±0.25	CHKD: JAMES	
X:XXX ±0.05	DR: LEO	TITLE: RJ45 Connector with 10/100 Base-T Integrated Magnetics
ANGLES ±1°	UNIT: mm	PART NO.: LPJF4017DNL4
	SCALE: 2/1	SHEET: 1/3
	REV: A	DWG NO.: LP08071139

Mechanical:

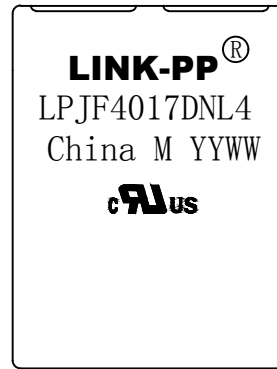
REV.	ECN NO.	DESCRIPTION	DATE	APPD
A	REL		11/07/2008	



Suggested PCB Layout (Top View)



Bottom Side View



Top Side View

NOTES:

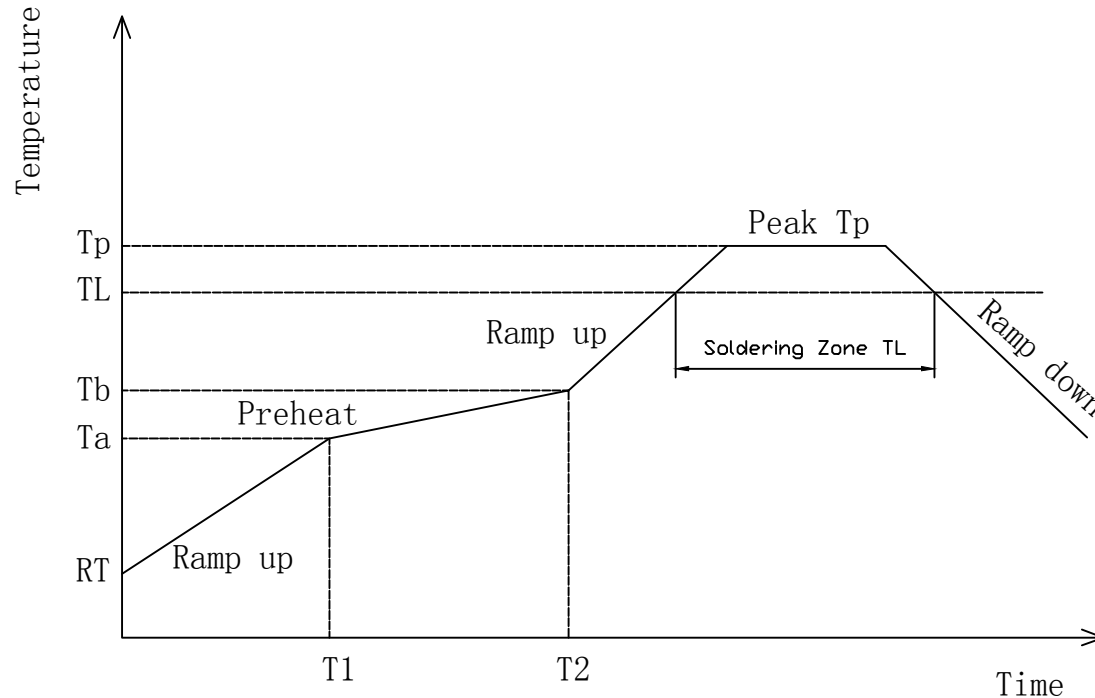
1. Designed to support application, such as SOHO (ADSL modems), LAN-on-Motherboard (LOM), hub and Switches.
2. Meets IEEE802.3 specification.
3. Connector Materials:  
 Housing: Thermoplastic PA46+30%G. F UL94V-0  
 Contact: Phosphor Bronze C5210R-EH Thickness=0.35mm  
 Pins: Brass C2680R-H Thickness=0.35mm  
 Shield: SUS 304-1/2H Thickness=0.2mm  
 Contact plating: Gold 6 micro-inches min. In contact area.
4. Reflow temperature : 250°C, 5 Sec.
5. UL Certification: File Number E484635.



X:X ±0.30	APPD: TOM	LINK-PP INT'L TECHNOLOGY CO., LIMITED
X:XX ±0.25	CHKD: JAMES	
X:XXX ±0.05	DR: LEO	TITLE: RJ45 Connector with 10/100 Base-T Integrated Magnetics
ANGLES ±1°	UNIT: mm	PART NO.: LPJF4017DNL4
	SCALE: 2/1	SHEET: 2/3
	REV: A	DWG NO.: LP08071139

# IR Reflow:

REV.	ECN NO.	DESCRIPTION	DATE	APPD
A	REL		11/07/2008	



Preheat:

Temperature (Ta-Tb) : 150-200°C

Time (t1-t2) : 60-180s

Holding Temperature: 217°C

Time (TL) : 60-150s

Max Temperature (Tp) : 250 (+0/-5°C)

Max Time (Tp) : 5s

The average speed: 3°C/S Max

The average cooling speed: 6°C/S Max

From 25°C to Products out of the furnace: 6 minutes Max



X:X ±0.30	APPD: TOM	LINK-PP INT'L TECHNOLOGY CO., LIMITED
X:XX ±0.25	CHKD: JAMES	
X:XXX ±0.05	DR: LEO	TITLE: RJ45 Connector with 10/100 Base-T Integrated Magnetics
ANGLES ±1°	UNIT: mm	PART NO.: LPJF4017DNL4
	SCALE: 2/1	SHEET: 3/3
	REV: A	DWG NO.: LP08071139