



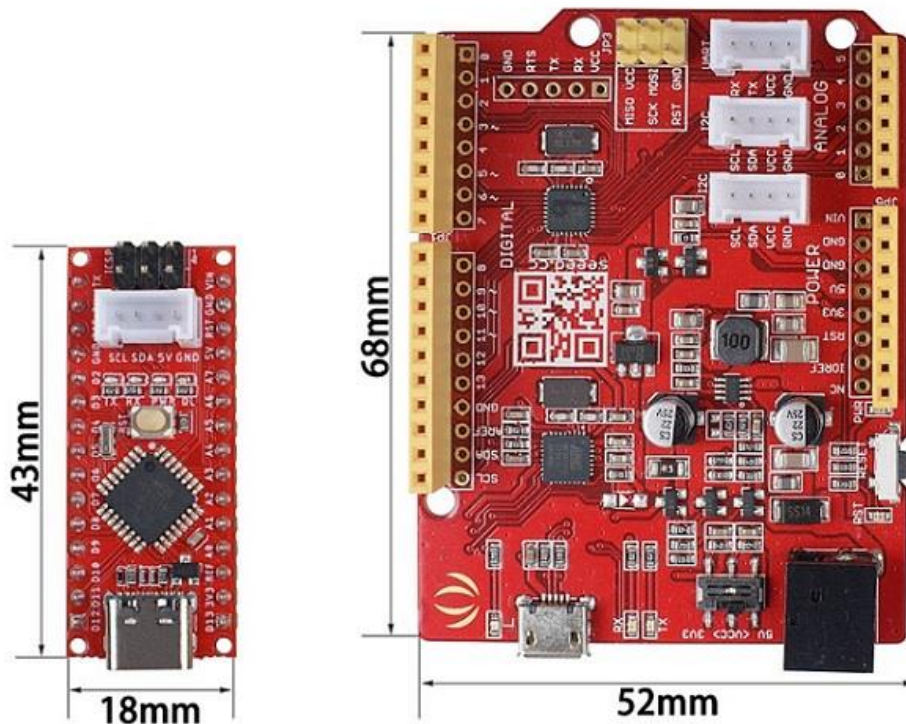
**seeed** studio  
The IoT Hardware Enabler

## Seeeduino Nano

The Seeeduino Nano is a compact board similar to the Seeeduino V4.2/Arduino UNO, and it is fully compatible with Arduino Nano on pinout and sizes.

### Seeeduino Nano VS. Seeeduino V4.2

The same as Seeedunio V4.2, Seeeduino Nano is built around Atmega328P -- 8-bit AVR microcontroller. So you can use the same program code on both boards. However, the dimensions of the two are significantly different. Less than a quarter of the size, but with almost the same features, Seeeduino Nano will save more space for your project, more suitable for space-constrained scenes.



## Seeeduino Nano VS. Arduino Nano

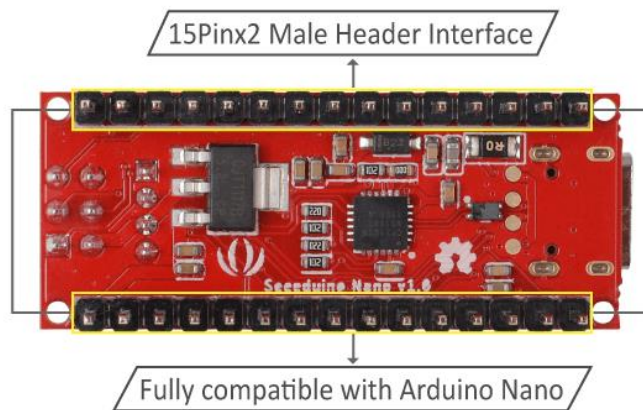
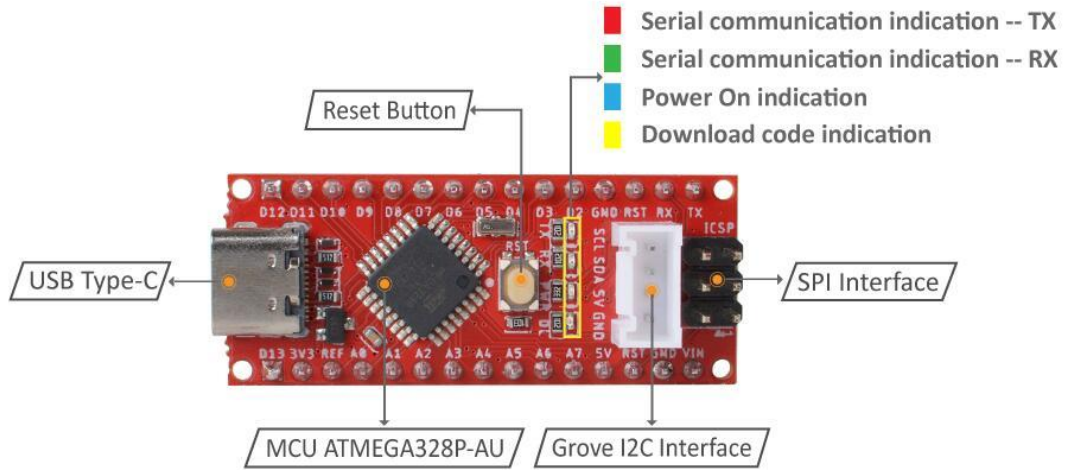
The Seeeduino Nano offers the same features and high-quality experience as the Arduino Nano in less than half the price. On the other hand, the Seeeduino Nano has also made the following improvements compared to the Arduino Nano. 1-Change the Mini-USB into Type-C, which is symmetrical and reversible. 2- Add one Grove I2C connector, with the help Grove system, you can play with hundreds of sensors and actuators simply by plugging.

Model	Processor	Input Voltage	IO Voltage	Analog In/Out	Digital IO/PWM	USB	Grove Connector
Seeeduino V4.2	ATmega328P	5V / 7-12V	3.3V/5V	6/0	14/6	micro-USB	2xI2C+1xUART
Seeeduino Nano	ATmega328P	5V / 7-12V	5V	8/0	14/6	Type C	1xI2C
Arduino Nano	ATmega328P	5V / 7-12V	5V	8/0	14/6	Mini-USB	

### Features

- 43mm x 18mm Tiny board
- 16M ATmega328P
- Fully compatible with Arduino Nano
- USB Type C for Programming and power
- On-board Grove I2C connector
- Breadboard-friendly

# Hardware Overview



## ECCN/HTS

ECCN	EAR99
HSCODE	8517709000
USHSCODE	85177000
UPC	