

Product name	P/N	Version	Document No.	Page
Detection switch	KAM4736K-4L0375-29LH	A/00		3/7

1、 GENERAL

1.1 APPLICATION

This specification applies to the requirements of the test switch

1.2 Operating Temperature Range

-20°C ~ 70°C (Normal humidity, normal air pressure)

1.3 Storage Temperature Range

-30°C ~ 80°C (Normal humidity, normal air pressure)

1.4 Test Conditions

Unless otherwise specified, tests and measurement shall be made in the following standard conditions:

Normal temperature.....5°C ~ 35°C

Normal humidity.....relative humidity 25% ~ 85%

Normal air pressure.....86Kpa ~ 106Kpa

If any doubt arise from the judgment, tests shall be conducted at the following conditions:

Temperature.....20°C ± 2°C

Relative humidity.....65% ± 5%

Air pressure.....86Kpa ~ 106Kpa

1.5 Storage method

1. Ensure that the product without package breaking or wetting before use.

2. Storage conditions:

Storage temperature: -5 ~ 35 °C;

Storage humidity: 25% ~ 80%;

Unopened status: Use up the product as soon as possible before six months. (calculated from shipment date). Over 6 months, please make sure below

before use it: terminal without oxidation or blackening, plastic parts without moisture absorption or bubble, ensure solderability.

Opened status: use up within 1 month;

Storage precautions: Please avoid the following environment: with high humidity, high temperature, corrosive gases and direct sunlight.

3. Do not stack too many switches.

Product name	P/N	Version	Document No.	Page
Detection switch	KAM4736K-4L0375-29LH	A/00		4/7

2. Detailed specification

2.1 Appearance: There should be no defects that affect the serviceability of product.

2.2 Style and dimension: shall conform to the assemble drawings.

2.3 Type of actuating: Detectionile feedback.

2.4 Ratings: DC 12V 0.1A

3. ELECTRICAL SPECIFICATION

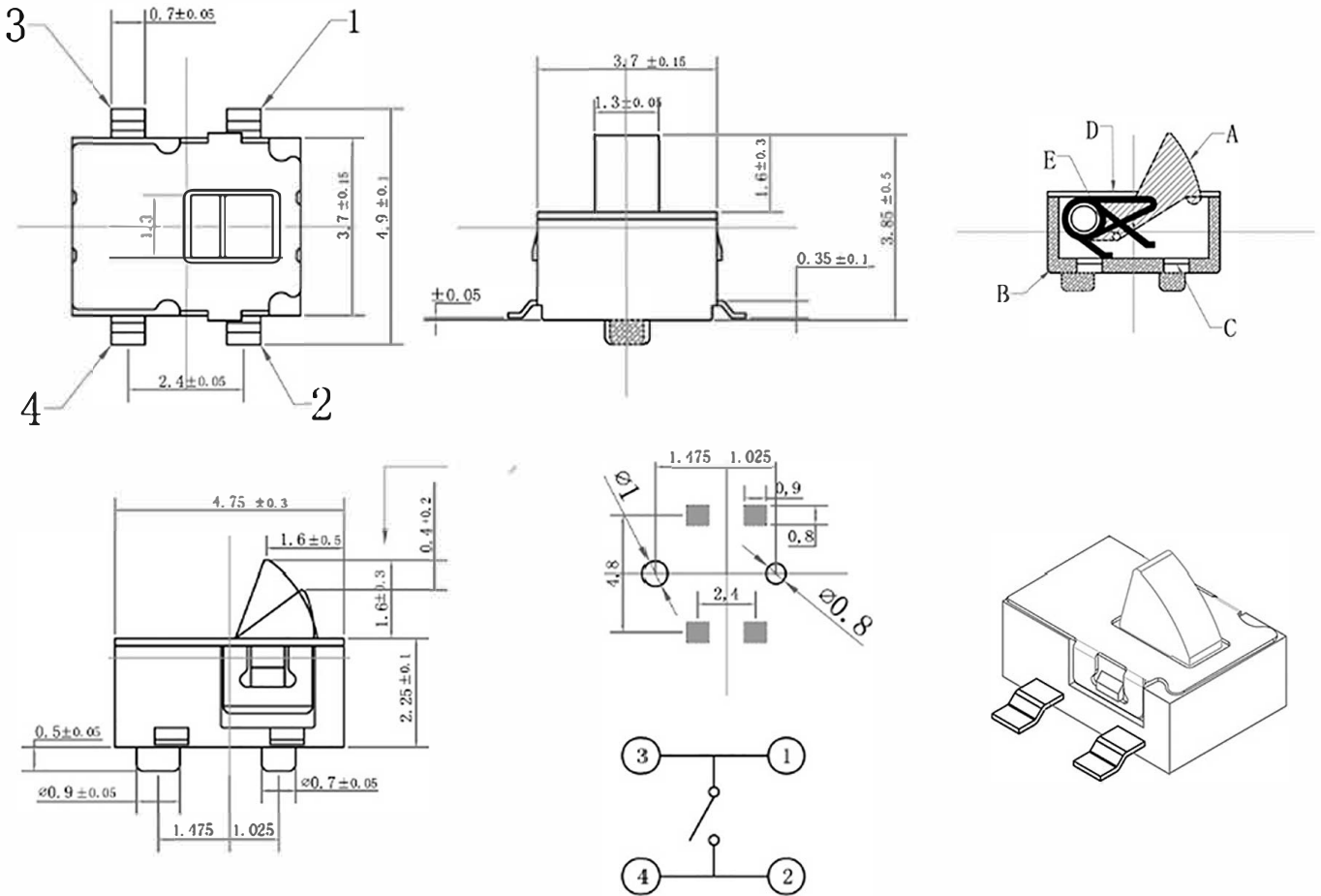
ITEM		TEST CONDITIONS	REQUIREMENTS
3.1	Contact Resistance	Being measured at 1kHz small current Contact Resistance mete. DC-12V,0.1A AC1KHz 20mV.	$\leq 150\text{m}\Omega$
3.2	Insulation Resistance	Measurements shall be made following Application of DC100Vpotential across Terminals and across terminals and frame For 1 minute.	$\geq 100\text{M}\Omega$
3.3	Dielectric voltage proof	100V AC (50Hz or 60Hz) shall be applied across terminals、 Between terminals and frame, for one minute.	There should be no breakdown and flashover

Product name	P/N	Version	Document No.	Page
Detection switch	KAM4736K-4L0375-29LH	A/00		5/7
ITEM	TEST CONDITIONS			REQUIREMENTS
4. MECHANICAL SPECIFICATION				
4.1	Operating Force	Placing the switch such that the direction of switch operation is vertical and then gradually increasing the load applied to the center of the stem, the maximum load required for the switch to come to a stop shall be measured.		30±20gf
4.2	Full Travel	Placing the switch such that the direction of switch operation is vertical and then applying static load of 2times operating force to the center of the stem; the travel distance for the switch to come to a stop shall be measured.		0.4±0.2mm
4.3	Terminal strength	A static force of 400gf being applied in one Direction on the tip of the terminal for 1minute.		There shall be no sigh of damage mechanically and electrically.
4.4	Lever strength	A static force of 1 Kg being applied in one direction of lever for one min.		The deformation shall not be extreme and the lever shall mechanically work normally
4.5	Solderability	Measurements shall be made following the test set forth below: (1) Solder temperature: 235±5 C° (2) Immersion time: 3s±0.5s		Except for the edge, the coating should cover a minimum 90%

Product name	P/N	Version	Document No.	Page
Detection switch	KAM4736K-4L0375-29LH	A/00		6/7
ITEM	TEST CONDITIONS			REQUIREMENTS
5、 ENVIRONMENTAL SPECIFICATION				
5.1	Endurance (switching action)	Cycles of operation at of 50 ~ 60 cycles per minute With unloading 100000 times.		Contact resistance 400mΩ max ITEN 3.2.
5.2	Heat test	80±2℃ for 96 hours, after test keep in normal condition for 30minutes.		1. Contact resistance 150mΩ max. (2) Insulation resistance 100MΩ min. (3) There shall be no sign of damage mechanically and electrically.
5.3	Cold test	At-20±3℃ for 96hours, after test kept in normal condition for 30minutes.		
5.4	Humidity	40±2℃ 90-96%RH for 96hrs. After test keep in normal condition for 30minutes.		
5.5	Salt test	At 5% NaCl, 35 C. After 24hours		No rust

APPROVAL SPECIFICATIONS

Product name	P/N	Version	Document No.	Page
Detection switch	KAM4736K-4L0375-29LH	A/00		7/7



General tolerance: ±0.2mm

NO.	NAME	MATERIAL	QTY.	FINISHING
1	Base	LCP	1	Black
2	Terminal	Phosphorus bronze	1	Ag plating
3	Spring	BRASS	1	Ag plating
4	Cover	SUS 301	1	
5	Stem	PA46	1	Black