

描述 / Descriptions

TO-92 塑封封装 PNP 半导体三极管。Silicon PNP transistor in a TO-92 Plastic Package.

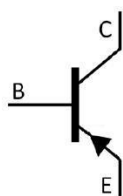
特征 / Features 用途 / Applications

低电流，低电压。用于一般放大及开关。

Low current, Low voltage.

General purpose and switching application.

内部等效电路 / Equivalent Circuit



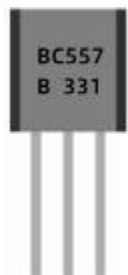
引脚排列 / Pinning



PIN1 : Emitter PIN 2 : Base PIN 3 : Collector

放大及印章代码 / hFE Classifications & Marking

*HFE(1)分档及打印

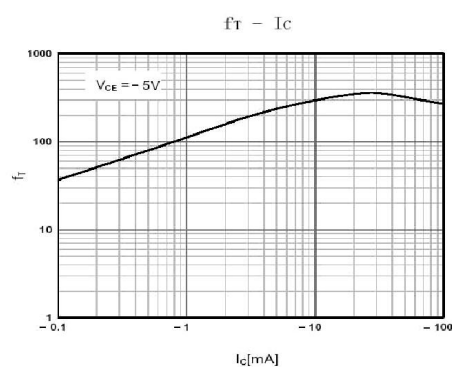
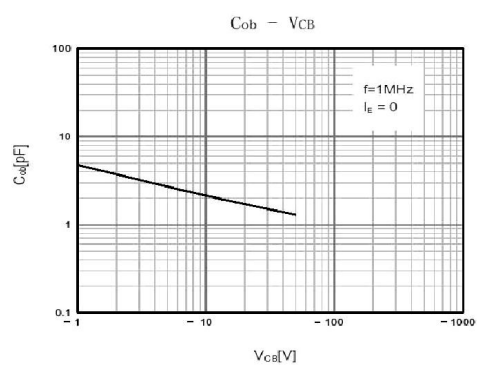
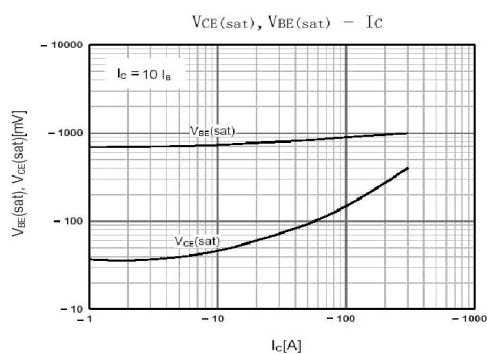
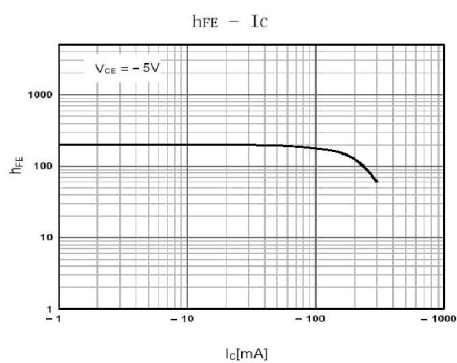
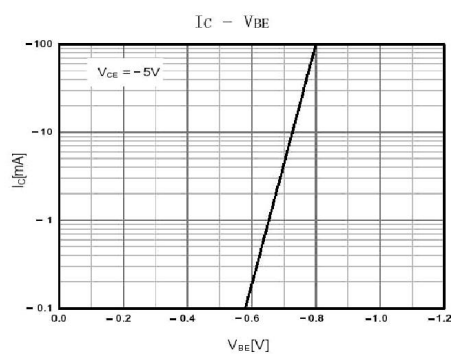
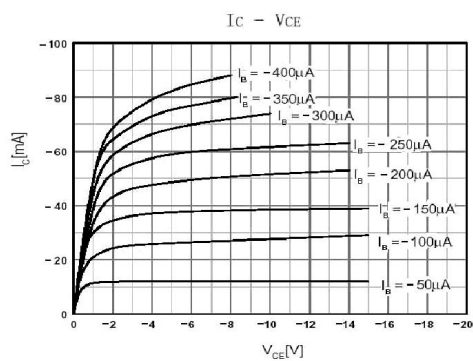
分 档	1	2				印记见下 具体内容以打印为准
H _{FE} (1)	200-400	250-600				
打印 (简例)	B	C				
其 它 说 明	封装外形: TO-92 管脚排列: C、B、E					

极限参数 / Absolute Maximum Ratings(Ta=25°C)

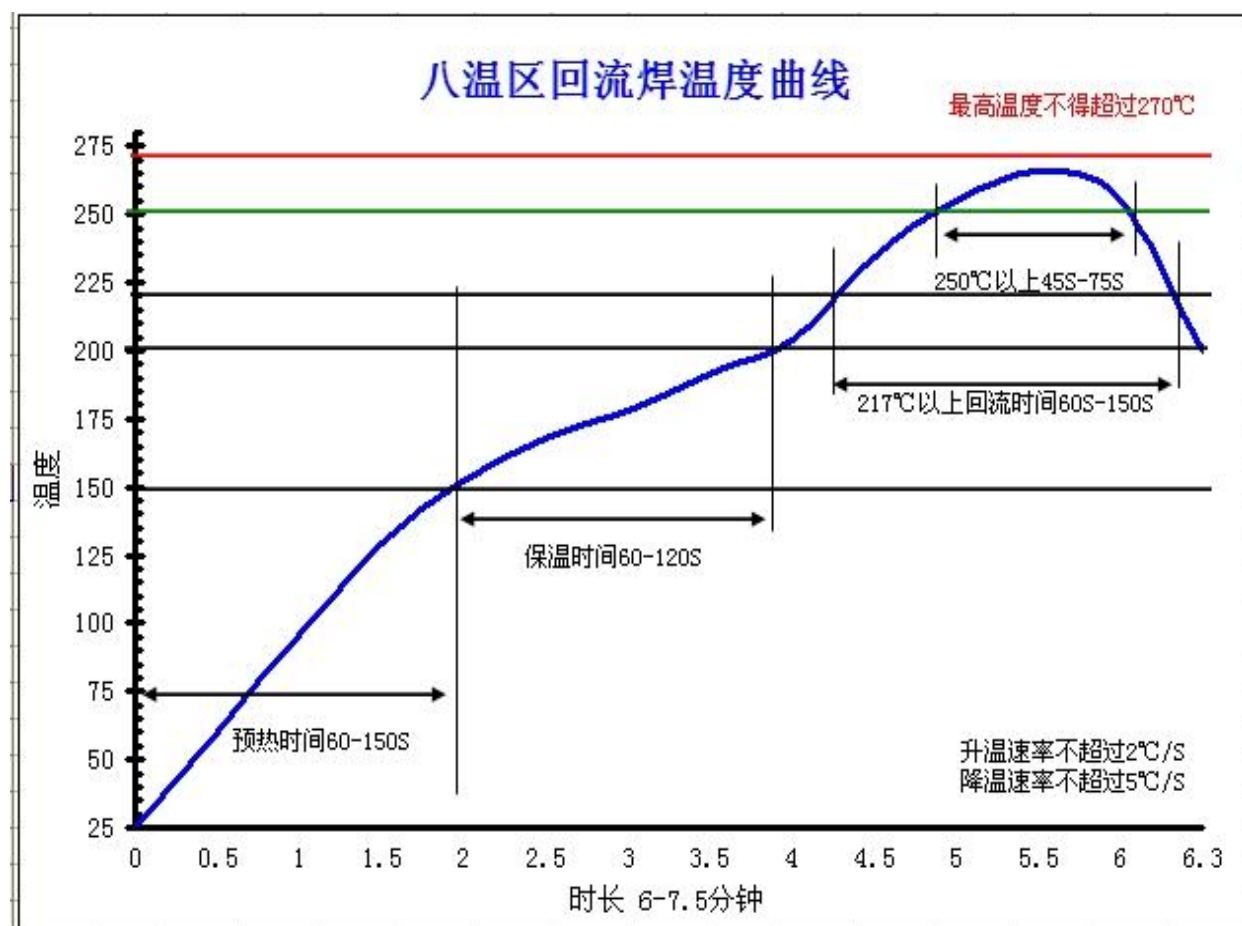
参数 Parameter	符号 Symbol	数值 Rating	单位 Unit
Collector to Base Voltage	V _{CBO}	-50	V
Collector to Emitter Voltage	V _{CEO}	-45	V
Emitter to Base Voltage	V _{EBO}	-5.0	V
Collector Current - Continuous	I _C	-100	mA
Emitter Current - Continuous	I _E	100	mA
Collector Power Dissipation	P _C	625	mW
Junction Temperature	T _j	150	°C
Storage Temperature Range	T _{stg}	-55~150	°C

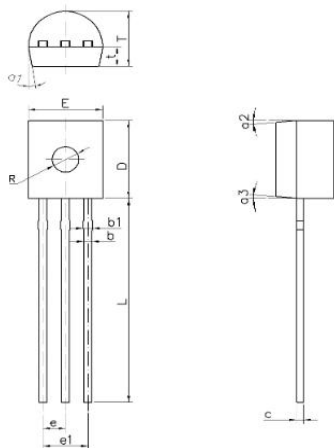
电性能参数 / Electrical Characteristics(Ta=25°C)

参数 Parameter	符号 Symbol	测试条件 Test Conditions	最小值 Min	典型值 Typ	最大值 Max	单位 Unit
Collector Cut-Off Current	I _{CBO}	V _{CB} =-30V I _E =0			-0.015	μA
DC Current Gain	h _{FE}	V _{CE} =-5.0V I _C =-2.0mA	125		800	
Collector-Emitter Saturation Voltage	V _{CE(sat)}	I _C =-100mA I _B =-5.0mA			-0.65	V
Base-Emitter Saturation Voltage	V _{BE(sat)}	I _C =-100mA I _B =-5.0mA		-0.9	-1.1	V
Base-Emitter Voltage	V _{BE(1)}	V _{CE} =-5.0V I _C =-2.0mA	-0.6		-0.75	V
	V _{BE(2)}	V _{CE} =-5.0V I _C =-10mA			-0.8	V
Current Gain Bandwidth Product	f _T	V _{CE} =-5.0V I _C =-10mA f=100MHz		150		MHz
Transition Frequency	C _{ob}	V _{CB} =-10V f=1.0MHz		4.5		pF
Noise Figure	NF	V _{CE} =-6.0V I _C =-0.1mA R _G =10KΩ f=1.0KHz		1.0	10	dB

电参数曲线图 / Electrical Characteristic Curve


波峰焊温度曲线图(无铅) / Temperature Profile for Dip Soldering(Pb-Free)



产品尺寸/Product Size


Symbol	Dimensions in Millimeters		
	Min	Nom	Max
a1	3*	5*	7*
a2	3*	5*	7*
a3	3*	5*	7*
b	0.35	—	0.45
b1	0.39	—	0.55
c	0.29	—	0.34
D	4.2	4.6	5.2
E	4.2	4.6	5.2
e	—	1.27	—
e1	—	2.54	—
L	13.5	14	14.5
R	—	1.5	—
T	3.5	3.6	3.75
t	1.1	1.2	1.35

