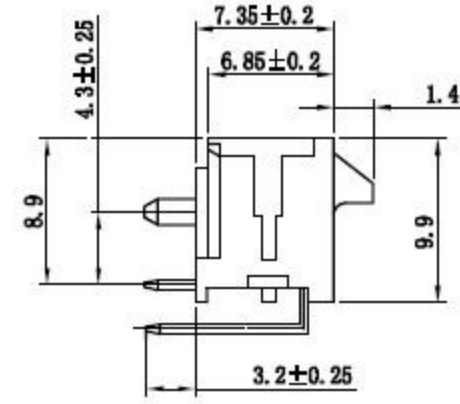
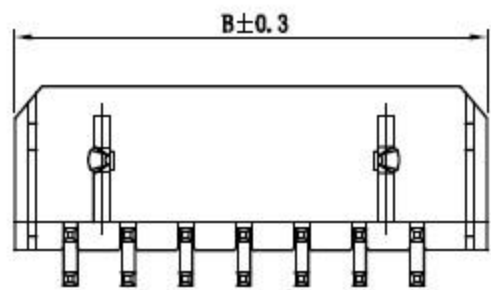
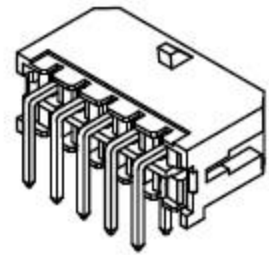
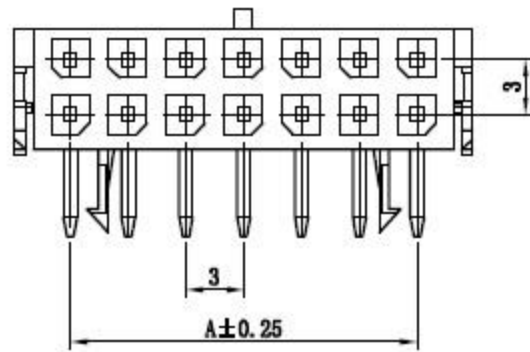
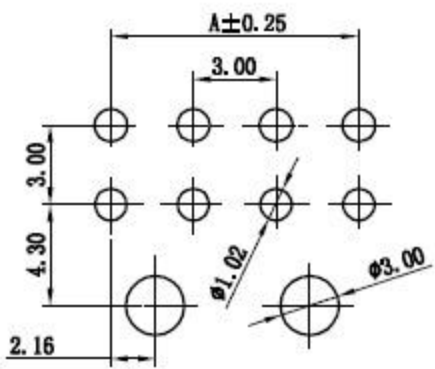


15 14 13 12 11 10 9 8 7 6 5 4 3 2 1

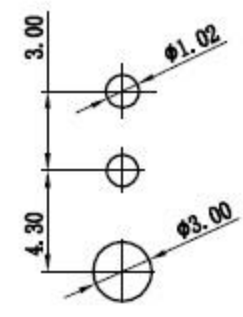
M
L
K
J
H
G
F
E
D
C
B
A



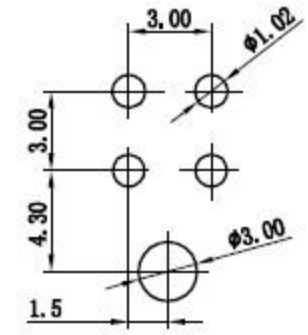
Poles	Part NO.		Dimensions mm	
			A	B
2	C3004-WR01×2	MX3.0-2×1AW	—	6.65
4	C3004-WR02×2	MX3.0-2×2AW	3.00	9.65
6	C3004-WR03×2	MX3.0-2×3AW	6.00	12.65
8	C3004-WR04×2	MX3.0-2×4AW	9.00	15.65
10	C3004-WR05×2	MX3.0-2×5AW	12.00	18.65
12	C3004-WR06×2	MX3.0-2×6AW	15.00	21.65
14	C3004-WR07×2	MX3.0-2×7AW	18.00	24.65
16	C3004-WR08×2	MX3.0-2×8AW	21.00	27.65
18	C3004-WR09×2	MX3.0-2×9AW	24.00	30.65
20	C3004-WR10×2	MX3.0-2×10AW	27.00	33.65
22	C3004-WR11×2	MX3.0-2×11AW	30.00	36.65
24	C3004-WR12×2	MX3.0-2×12AW	33.00	39.65



8P~24P P.C.B LAYOUT



2P P.C.B LAYOUT



4P~6P P.C.B LAYOUT

2	Contact	Brass Tin	N	
1	Housing	PA46 (UL94V-0)	1	Black
序号	图号	名称	材料	数量
				附注

未注公差			
X.° ±3° X.X° ±0.5°			
>0-3	>3-18	>18-50	>50-120
±0.12	±0.15	±0.3	±0.5
制作	审核	批准	



见图解	品名	MX3.
-----	----	------

15 14 13 12 11 10 9 8 7 6 5 4 3 2 1