



**Part Number :** [15246100](#)

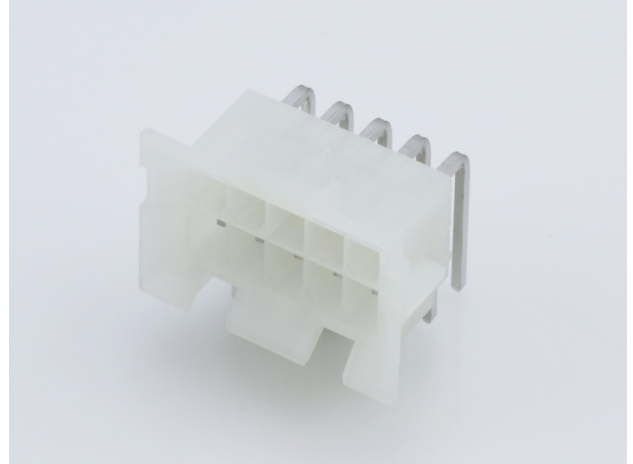
**Product Description :** Mini-Fit BMI Header, Dual Row, Right-Angle, with Snap-in Plastic Peg PCB Lock, 10 Circuits, PA Polyamide Nylon 6/6, UL 94V-2, with Tin (Sn) Plating

**Series Number :** 42404

**Status :** Active

**Product Category :** PCB Headers and Receptacles

**Engineering Number :** A-42404-10A1



---

## Documents & Resources

### Drawings

[Drawing 015246100\\_sd.pdf](#)

[Packaging Design Drawing PK-42404-002-001.pdf](#)

### 3D Models and Design Files

[3D Model 015246100\\_stp.zip](#)

[Symbol Footprint Data SYM-A42404-10XX-001.zip](#)

### Specifications

[Application Specification 424040001-AS-000.pdf](#)

[Product Specification PS-45750-001-001.pdf](#)

[Product Specification 55560002-PS-ES-000.pdf](#)

[Product Specification PS-5556-002-001.pdf](#)

[Product Specification 55560002-PS-CH-000.pdf](#)

[Product Specification 55560002-PS-SK-000.pdf](#)

[Test Summary TS-42404-001-001.pdf](#)

[Test Summary TS-5556-002-001.pdf](#)

---

## Product Environment Compliance

### Compliance

|                    |  |
|--------------------|--|
| GADSL/IMDS         | Compliant with Exemption 44; 33                |
| China RoHS         |  |
| EU ELV             | Not Relevant                                   |
| Low-Halogen Status | Low-Halogen per IEC 61249-2-21                 |
| REACH SVHC         | Not Contained per D(2023)3788-DC (14 Jun 2023) |

|         |                           |
|---------|---------------------------|
| EU RoHS | Compliant per EU 2015/863 |
|---------|---------------------------|

### Multiple Part Product Compliance Statements

- Eu RoHS
- REACH SVHC
- Low-Halogen

### Multiple Part Industry Compliance Documents

- IPC 1752A Class C
- IPC 1752A Class D
- Molex Product Compliance Declaration
- IEC-62474
- chemSHERPA (xml)

### EU RoHS Certificate of Compliance

---

## Part Details

### General

|                |   |
|----------------|---|
| Status         | Active  |
| Category       | PCB Headers and Receptacles   |
| Series         | 42404   |
| Description    | Mini-Fit BMI Header, Dual Row, Right-Angle, with Snap-in Plastic Peg PCB Lock, 10 Circuits, PA Polyamide Nylon 6/6, UL 94V-2, with Tin (Sn) Plating   |
| Application    | Board-to-Board, Power, Wire-to-Board  |
| Comments       | Current = 13A max. per circuit when header is mated to a receptacle loaded with 45750 Mini-Fit Plus HCS Crimp Terminal Crimped to 16 AWG wire. See Molex product specification PS-45750-001 for additional current de-rating information. |
| Component Type | PCB Header  |
| Product Family | Mini-Fit Family Power Connectors  |
| Product Name   | Mini-Fit BMI  |
| UPC            | 800753684218  |

### Agency

|     |         |
|-----|---------|
| CSA | LR19980 |
| UL  | E29179  |

## Electrical

|                               |       |
|-------------------------------|-------|
| Current - Maximum per Contact | 13.0A |
| Voltage - Maximum             | 600V  |

## Physical

|                                |                |
|--------------------------------|----------------|
| Breakaway                      | No             |
| Circuits (Loaded)              | 10             |
| Circuits (maximum)             | 10             |
| Color - Resin                  | Natural        |
| Durability (mating cycles max) | 30             |
| Flammability                   | 94V-2          |
| Glow-Wire Capable              | No             |
| Guide to Mating Part           | Yes            |
| Lock to Mating Part            | Yes            |
| Material - Metal               | Brass          |
| Material - Plating Mating      | Tin            |
| Material - Plating Termination | Tin            |
| Material - Resin               | Nylon          |
| Net Weight                     | 4.041/g        |
| Number of Rows                 | 2              |
| Orientation                    | Right Angle    |
| Packaging Type                 | Tray           |
| PC Tail Length                 | 3.30mm         |
| PCB Locator                    | Yes            |
| PCB Retention                  | Yes            |
| PCB Thickness - Recommended    | 1.80mm         |
| Pitch - Mating Interface       | 4.20mm         |
| Plating min - Mating           | 2.540µm        |
| Plating min - Termination      | 2.540µm        |
| Polarized to Mating Part       | Yes            |
| Polarized to PCB               | Yes            |
| Shrouded                       | Partial        |
| Stackable                      | No             |
| Temperature Range - Operating  | -40° to +105°C |

|                             |              |
|-----------------------------|--------------|
| Termination Interface Style | Through Hole |
|-----------------------------|--------------|

## Solder Process Data

|                              |      |
|------------------------------|------|
| Max-Duration                 | 5    |
| Lead-Free Process Capability | WAVE |
| Max-Cycle                    | 1    |
| Max-Temp                     | 240  |

---

## Mates With / Use With

### Mates with Part(s)

| Description   | Part Number       |
|---|-------------------|
| Mini-Fit BMI Receptacle Housing, 4.20mm Pitch, Dual Row with Panel Mount Ears, PA Polyamide Nylon 6/6, UL 94V-2, 10 Circuits        | <u>0015060100</u> |
| Mini-Fit BMI Receptacle Header, 4.20mm Pitch, Dual Row, Vertical, with Snap-In Plastic Pegs, 2.54µm Tin (Sn), UL 94V-2, 10 Circuits | <u>0015247100</u> |
| Mini-Fit Jr. Receptacle Housing, Dual Row, 10 Circuits, UL 94V-2, Natural   | <u>0039012100</u> |
| Mini-Fit HCS Receptacle Header, 4.20mm Pitch, Dual Row, Vertical, Blind Mating, with Snap-in Plastic Pegs, 10 Circuits              | <u>0444751011</u> |
| Mini-Fit Jr.-to-Mini-Fit Jr. Off-the-Shelf (OTS) Overmolded Cable Assemblies  | <u>245135</u>     |