



Part Number : [39012200](#)

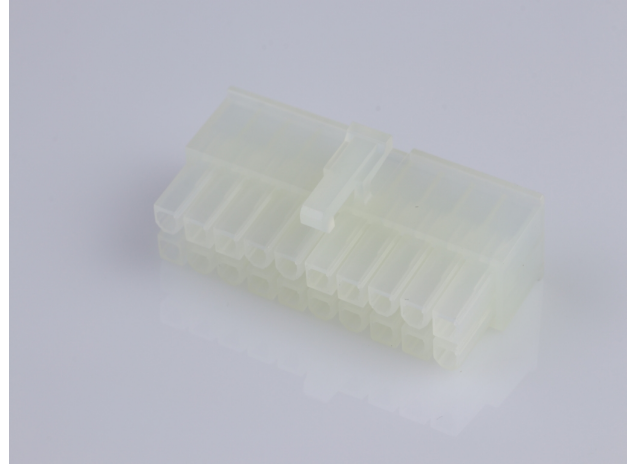
Product Description : Mini-Fit Jr. Receptacle Housing, Dual Row, 20 Circuits, UL 94V-2, Natural

Series Number : 5557

Status : Active

Product Category : Connector Housings

Engineering Number : 5557-20R



Documents & Resources

Drawings

[Drawing 039012200_sd.pdf](#)

[Packaging Design Drawing PK-5557-002-000.pdf](#)

3D Models and Design Files

[3D Model 039012200_stp.zip](#)

Specifications

[Application Specification 55560001-AS-000.pdf](#)

[Application Specification AS-5557-001-001.pdf](#)

[Product Specification PS-45750-001-001.pdf](#)

[Product Specification 55560002-PS-CH-000.pdf](#)

[Product Specification 55560002-PS-ES-000.pdf](#)

[Product Specification 55560002-PS-SK-000.pdf](#)


[Product Specification PS-5556-001-001.pdf](#)

[Product Specification PS-5556-002-001.pdf](#)

[Test Summary 55560010-TS-000.pdf](#)

Product Environment Compliance

Compliance

GADSL/IMDS	Not Relevant
China RoHS	
EU ELV	Not Relevant
Low-Halogen Status	Low-Halogen per IEC 61249-2-21
REACH SVHC	Not Contained per D(2023)3788-DC (14 Jun 2023)

EU RoHS	Compliant per EU 2015/863
---------	---------------------------

Multiple Part Product Compliance Statements

- Eu RoHS
- REACH SVHC
- Low-Halogen

Multiple Part Industry Compliance Documents

- IPC 1752A Class C
- IPC 1752A Class D
- Molex Product Compliance Declaration
- IEC-62474
- chemSHERPA (xml)

EU RoHS Certificate of Compliance

Part Details

General

Status	Active
Category	Connector Housings
Series	5557
Description	Mini-Fit Jr. Receptacle Housing, Dual Row, 20 Circuits, UL 94V-2, Natural
Application	Power, Wire-to-Board, Wire-to-Wire
Comments	Current = 13A max. per circuit when header is mated to a receptacle loaded with 45750 series terminals crimped to 16 AWG wire. See Molex product specification PS-45750-001 for additional current derating information.
Product Family	Mini-Fit Family Power Connectors
Product Name	Mini-Fit Jr.
UPC	800753584013

Agency

CSA	LR19980
UL	E29179

Physical

Breakaway	No
Circuits (maximum)	20
Color - Resin	Natural
Flammability	94V-2
Gender	Receptacle
Glow-Wire Capable	No
Material - Resin	Nylon
Net Weight	3965.900/mg
Number of Rows	2
Packaging Type	Bag
Panel Mount	No
Pitch - Mating Interface	4.20mm
Pitch - Termination Interface	4.20mm
Polarized to Mating Part	Yes
Stackable	No
Temperature Range - Operating	-40° to +105°C

Solder Process Data

Lead-Free Process Capability	N/A
------------------------------	-----

Mates With / Use With

Mates with Part(s)

Description	Part Number
Mini-Fit BMI Right-Angle Dual Row Headers	<u>42404</u>
Mini-Fit BMI Vertical Dual Row Headers	<u>42440</u>
Mini-Fit BMI Right-Angle Dual Row Headers	<u>43810</u>
Mini-Fit BMI Vertical Dual Row Headers	<u>44068</u>
Mini-Fit Jr. Dual Row Test Plugs	<u>44281</u>
Mini-Fit Jr. Plug Housings	<u>5559</u>
Mini-Fit Jr. Vertical Headers	<u>5566</u>
Mini-Fit Jr. Right-Angle Headers	<u>5569</u>

Mini-Fit Jr. Dual Row Headers	<u>87427</u>
-------------------------------	--------------

Use with Part(s)

Description	Part Number
Pre-Crimped Lead Mini-Fit Female-to-Mini-Fit Female, Tin (Sn) Plating, 150.00mm Length, 18 AWG, Red	/content/molex/molex-dot-com/us/en/products/product-page.html/797580001.html
Pre-Crimped Lead Mini-Fit Female-to-Mini-Fit Female, Tin (Sn) Plating, 300.00mm Length, 18 AWG, Red	/content/molex/molex-dot-com/us/en/products/product-page.html/797580009.html
Mini-Fit Female Crimp Terminals	<u>5556</u>
Mini-Fit Plus Female Crimp Terminals	<u>45750</u>