



Part Number : [39290083](#)

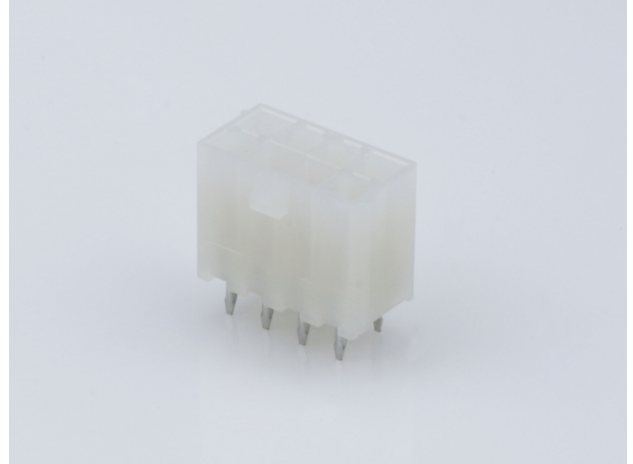
Product Description : Mini-Fit Jr. Vertical Header, 4.20mm Pitch, Dual Row, 8 Circuits, without Snap-in Plastic Peg PCB Lock, Gold, Natural

Series Number : 5566

Status : Active

Product Category : PCB Headers and Receptacles

Engineering Number : 5566-08AGS



Documents & Resources

Drawings

[Drawing 039290083_sd.pdf](#)

[Packaging Design Drawing PK-5566-000.pdf](#)

3D Models and Design Files

[3D Model 039290083_stp.zip](#)

Specifications

[Application Specification AS-5557-001-001.pdf](#)


[Packaging Specification PK-5566-003-001.pdf](#)

[Product Specification PS-5556-001-001.pdf](#)

[Test Summary TS-5556-002-001.pdf](#)

Product Environment Compliance

Compliance

| | |
|--------------------|---|
| GADSL/IMDS | Not Relevant |
| China RoHS |  |
| EU ELV | Not Relevant |
| Low-Halogen Status | Low-Halogen per IEC 61249-2-21 |
| REACH SVHC | Not Contained per D(2023)3788-DC (14 Jun 2023) |
| EU RoHS | Compliant per EU 2015/863 |

[Multiple Part Product Compliance Statements](#)

- Eu RoHS
- REACH SVHC
- Low-Halogen

Multiple Part Industry Compliance Documents

- IPC 1752A Class C
- IPC 1752A Class D
- Molex Product Compliance Declaration
- IEC-62474
- chemSHERPA (xml)

EU RoHS Certificate of Compliance

Part Details

General

| | |
|----------------|---|
| Status | Active |
| Category | PCB Headers and Receptacles |
| Series | 5566 |
| Description | Mini-Fit Jr. Vertical Header, 4.20mm Pitch, Dual Row, 8 Circuits, without Snap-in Plastic Peg PCB Lock, Gold, Natural |
| Application | Power, Wire-to-Board |
| Comments | The 5566 header should be used with standard Mini-Fit female terminals. If increased amperage of up to 13A per circuit is needed, please consider using the Mini-Fit Plus HCS family 45750 terminals with 46015 headers; See Molex Product specification PS-5666-001 for current de-rating information. |
| Component Type | PCB Header |
| Product Family | Mini-Fit Family Power Connectors |
| Product Name | Mini-Fit Jr. |
| UPC | 800754205801 |

Agency

| | |
|-----|---------|
| CSA | LR19980 |
| UL | E29179 |

Electrical

| | |
|-------------------------------|------|
| Current - Maximum per Contact | 9.0A |
|-------------------------------|------|

| | |
|-------------------|------|
| Voltage - Maximum | 600V |
|-------------------|------|

Physical

| | |
|--------------------------------|----------------|
| Breakaway | No |
| Circuits (Loaded) | 8 |
| Circuits (maximum) | 8 |
| Color - Resin | Natural |
| Durability (mating cycles max) | 30 |
| First Mate / Last Break | No |
| Flammability | 94V-2 |
| Glow-Wire Capable | No |
| Guide to Mating Part | No |
| Keying to Mating Part | None |
| Lock to Mating Part | Yes |
| Material - Metal | Brass |
| Material - Plating Mating | Gold |
| Material - Plating Termination | Matte Tin |
| Material - Resin | Nylon |
| Net Weight | 2214.304/mg |
| Number of Rows | 2 |
| Orientation | Vertical |
| Packaging Type | Bag |
| PC Tail Length | 3.50mm |
| PCB Locator | Yes |
| PCB Retention | None |
| PCB Thickness - Recommended | 1.60mm |
| Pitch - Mating Interface | 4.20mm |
| Pitch - Termination Interface | 4.20mm |
| Plating min - Mating | 0.762µm |
| Plating min - Termination | 2.540µm |
| Polarized to Mating Part | Yes |
| Polarized to PCB | Yes |
| Shrouded | Fully |
| Stackable | No |
| Temperature Range - Operating | -40° to +105°C |

| | |
|-----------------------------|--------------|
| Termination Interface Style | Through Hole |
|-----------------------------|--------------|

Solder Process Data

| | |
|------------------------------|------|
| Max-Duration | 5 |
| Lead-Free Process Capability | WAVE |
| Max-Cycle | 1 |
| Max-Temp | 260 |

Mates With / Use With

Mates with Part(s)

| Description | Part Number |
|---|---------------|
| Mini-Fit TPA2 and Mini-Fit Sigma Dual Row Receptacle Housings | <u>172708</u> |
| Mini-Fit Jr. Receptacle Housings | <u>5557</u> |