



Part Number : [39291088](#)

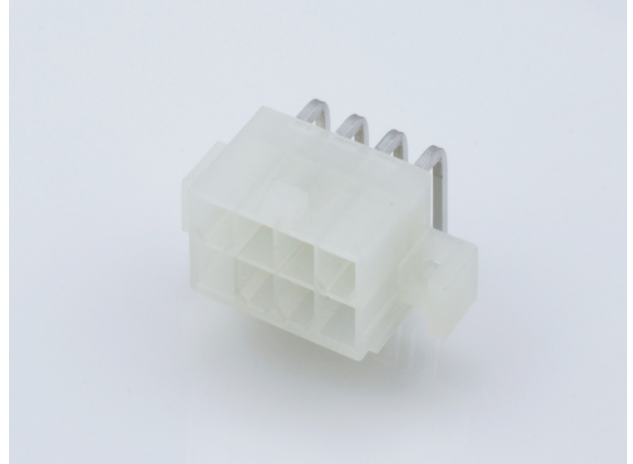
Product Description : Mini-Fit Jr. Header, Dual Row, Right-Angle, with PCB Mounting Flange, 8 Circuits, PA Polyamide Nylon 6/6 94V-2, Tin (Sn) Plating

Series Number : 5569

Status : Active

Product Category : PCB Headers and Receptacles

Engineering Number : 5569-08A1



Documents & Resources

Drawings

[Drawing 039291088_sd.pdf](#)

[Packaging Design Drawing 55690001-PK-000.pdf](#)

3D Models and Design Files

[3D Model 039291088_stp.zip](#)

Specifications

[Application Specification AS-5557-001-001.pdf](#)


[Packaging Specification PK-5569-002-001.pdf](#)

[Product Specification PS-45750-001-001.pdf](#)

[Product Specification PS-5556-001-001.pdf](#)

Product Environment Compliance

Compliance

| | |
|--------------------|---|
| GADSL/IMDS | Not Relevant |
| China RoHS |  |
| EU ELV | Not Relevant |
| Low-Halogen Status | Low-Halogen per IEC 61249-2-21 |
| REACH SVHC | Not Contained per D(2023)3788-DC (14 Jun 2023) |
| EU RoHS | Compliant per EU 2015/863 |

[Multiple Part Product Compliance Statements](#)

- Eu RoHS
- REACH SVHC
- Low-Halogen

Multiple Part Industry Compliance Documents

- IPC 1752A Class C
- IPC 1752A Class D
- Molex Product Compliance Declaration
- IEC-62474
- chemSHERPA (xml)

EU RoHS Certificate of Compliance

Part Details

General

| | |
|----------------|--|
| Status | Active |
| Category | PCB Headers and Receptacles |
| Series | 5569 |
| Description | Mini-Fit Jr. Header, Dual Row, Right-Angle, with PCB Mounting Flange, 8 Circuits, PA Polyamide Nylon 6/6 94V-2, Tin (Sn) Plating |
| Application | Power, Wire-to-Board |
| Comments | Current = 13A max. per circuit when header is mated to a receptacle loaded with 45750 Mini-Fit Plus HCS Crimp Terminal Crimped to 16 AWG wire. See Molex Product specification PS-5556-001 for additional current de-rating information. |
| Component Type | PCB Header |
| Product Family | Mini-Fit Family Power Connectors |
| Product Name | Mini-Fit Jr. |
| UPC | 800753580558 |

Agency

| | |
|-----|---------|
| CSA | LR19980 |
| UL | E29179 |

Electrical

| | |
|-------------------------------|-------|
| Current - Maximum per Contact | 13.0A |
|-------------------------------|-------|

| | |
|-------------------|------|
| Voltage - Maximum | 600V |
|-------------------|------|

Physical

| | |
|--------------------------------|----------------|
| Breakaway | No |
| Circuits (Loaded) | 8 |
| Circuits (maximum) | 8 |
| Color - Resin | Natural |
| Durability (mating cycles max) | 30 |
| First Mate / Last Break | No |
| Flammability | 94V-2 |
| Glow-Wire Capable | No |
| Guide to Mating Part | No |
| Keying to Mating Part | None |
| Lock to Mating Part | Yes |
| Material - Metal | Brass |
| Material - Plating Mating | Matte Tin |
| Material - Plating Termination | Matte Tin |
| Material - Resin | Nylon |
| Net Weight | 3.202/g |
| Number of Rows | 2 |
| Orientation | Right Angle |
| Packaging Type | Bag |
| PCB Locator | Yes |
| PCB Retention | Yes |
| PCB Thickness - Recommended | 1.78mm |
| Pitch - Mating Interface | 4.20mm |
| Pitch - Termination Interface | 4.20mm |
| Plating min - Mating | 2.540µm |
| Plating min - Termination | 2.540µm |
| Polarized to Mating Part | Yes |
| Polarized to PCB | Yes |
| Shrouded | Fully |
| Stackable | No |
| Temperature Range - Operating | -40° to +105°C |
| Termination Interface Style | Through Hole |

Solder Process Data

| | |
|------------------------------|------|
| Max-Duration | 5 |
| Lead-Free Process Capability | WAVE |
| Max-Cycle | 1 |
| Max-Temp | 260 |

Mates With / Use With

Mates with Part(s)

| Description | Part Number |
|--|---------------|
| Mini-Fit Jr. Receptacle Housings | <u>5557</u> |
| Mini-Fit TPA2-to-Mini-Fit TPA2 Off-the-Shelf (OTS) Cable Assemblies | <u>45135</u> |
| Mini-Fit TPA2 and Mini-Fit Sigma Dual Row Receptacle Housings | <u>172708</u> |
| Mini-Fit Jr.-to-Mini-Fit Jr. Off-the-Shelf (OTS) Overmolded Cable Assemblies | <u>245135</u> |