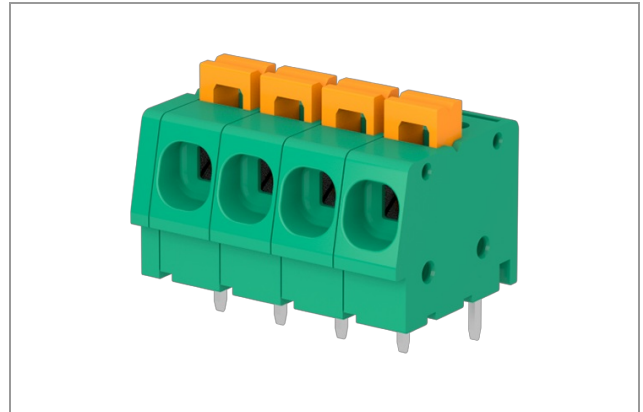


MCM03001 - Terminal block

Number of poles: 3, Spring tightening, 16A, 2.5mm², 12AWG, 300V, Pitch 5 mm, Not stackable, Connection Angle 0°, Number of levels: 1, Green (RAL 6032), Soldering technology Wave, UL, VDE, CUL



Number of poles:	3
Number of levels:	1
Sides configuration:	Not stackable
Pitch:	5 mm
Voltage:	300 V
Current :	16 A
Wire section:	0.2 ÷ 2.5 mm ² / 30 ÷ 12 AWG
Available approvals:	UL, VDE, CUL

General Data

Features

Screw dimension	na
Stripping length	11.5 mm
Operating temperature range	-40°C ÷ 105°C
Contact resistance	<15 mOhm
Insulation resistance	>1 GOhm

Certifications

CUL (n.E167473)

Rated voltage	300 V
Nominal current	16 A
Wire section	12 AWG

UL (n.E167473)

Usage Group	B	C	D
Rated voltage	300 V	-	-
Nominal current	16 A		
Wire section	12 AWG		
Insulating category	I		

VDE (n.40029775 Reg.-Nr. D371)

Rated voltage	250 V
Nominal current	16 A
Wire section	2.5 mm ²
Insulating category	I

Materials

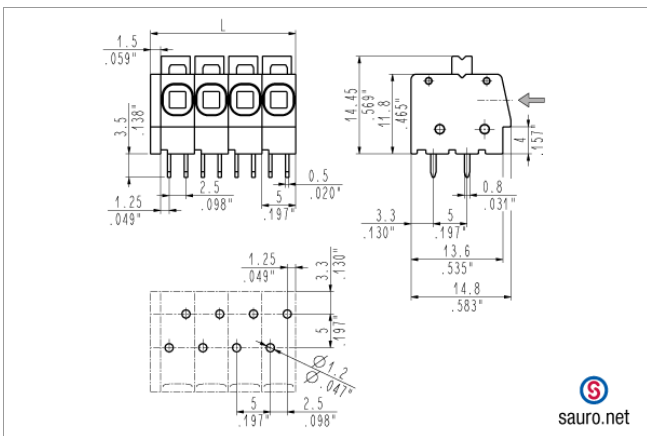
Components

Terminal contact	Nickel and tin on copper alloy
Spring tightening	Stainless steel
Insulating housing material	PA Polyamide
Insulating material group	I (CTI \geq 600V)
Self-extinguishing class UL94	V0

Available colors

green	(similar to RAL 6032)
black	(similar to RAL 9005)
light grey	(similar to RAL 7035)
dark gray	(similar to RAL 7040)
orange	(similar to RAL 2003)
blue	(similar to RAL 5012)
red	(similar to RAL 3017)
another colors	(on demand)

Technical drawing



Derating curve

