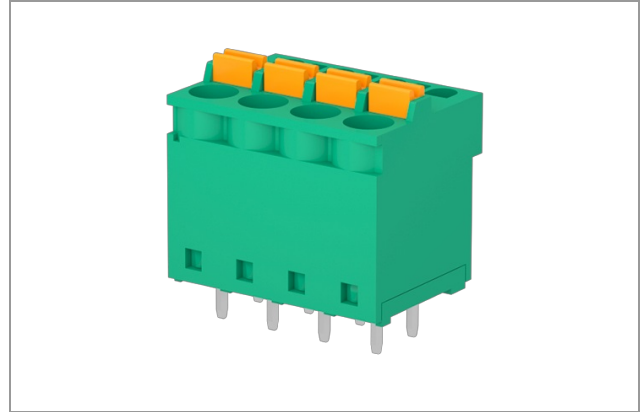


MCQ10001 - Terminal block

Number of poles: 10, Spring tightening, 16A, 2.5mm², 12AWG, 300V, Pitch 5 mm, Side stackable, Connection Angle 90°, Number of levels: 1, Green (RAL 6032), Soldering technology Wave, UL, CUL, IEC



Number of poles:	10
Number of levels:	1
Sides configuration:	Side stackable
Pitch:	5 mm
Voltage:	300 V
Current :	16 A
Wire section:	0.05 ÷ 2.5 mm ²
Available approvals:	UL, CUL, IEC

General Data

Features

Screw dimension	na
Stripping length	10 mm
Operating temperature range	-40°C ÷ 105°C
Contact resistance	<15 mOhm
Insulation resistance	>1 GOhm

Certifications

CUL (n.E167473)

Wire section	12 AWG
--------------	--------

IEC (n.EN60998)

Rated voltage	250 V		
Nominal current	16 A		
Wire section	2.5 mm ²		
Insulating category	I		
Overvoltage category/Pollution degree	III/3	III/2	II/2
Impulse voltage	4kV	4kV	4kV
Rated voltage	300V	300V	600V
Insulation voltage	320V	320V	630V

UL (n.E167473)

Usage Group	B	C	D
Rated voltage	300 V	-	-
Nominal current	16 A		
Wire section	12 AWG		

Materials

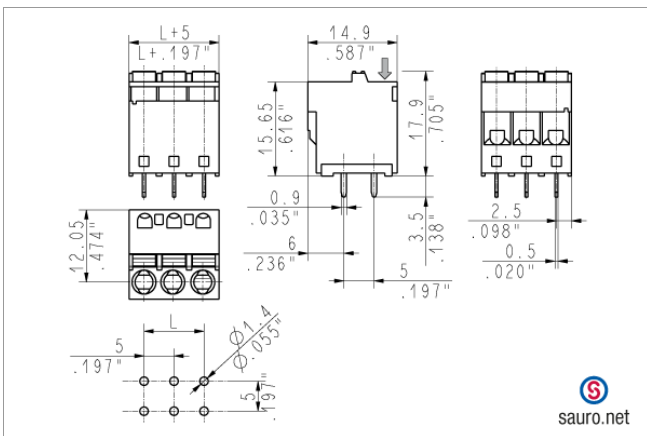
Components

Terminal contact	Nickel and tin on copper alloy
Spring tightening	Stainless steel
Insulating housing material	PA Polyamide
Insulating material group	I (CTI >= 600V)
Self-extinguishing class UL94	V0

Available colors

green	(similar to RAL 6032)
black	(similar to RAL 9005)
light grey	(similar to RAL 7035)
dark gray	(similar to RAL 7040)
orange	(similar to RAL 2003)
blue	(similar to RAL 5012)
red	(similar to RAL 3017)
another colors	(on demand)

Technical drawing



Derating curve

