



**AOD4185/AOI4185**

**P-Channel Enhancement Mode Field Effect Transistor**

**General Description**

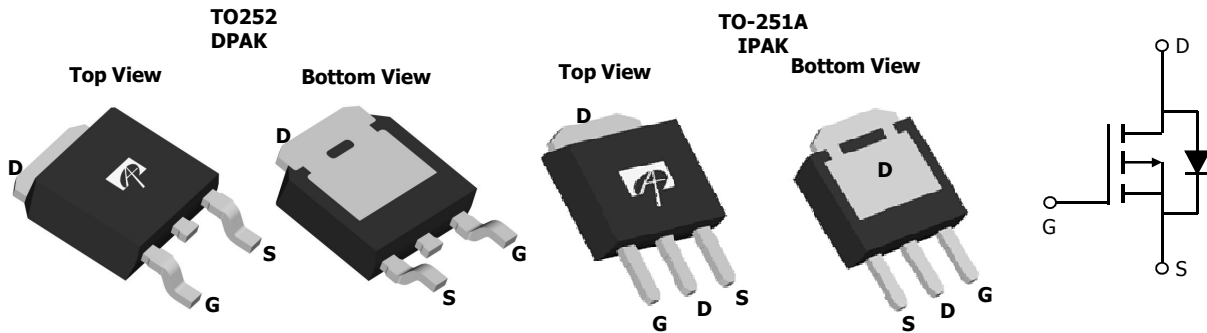
The AOD4185/AOI4185 uses advanced trench technology to provide excellent  $R_{DS(ON)}$  and low gate charge. With the excellent thermal resistance of the DPAK/IPAK package, this device is well suited for high current applications.

- RoHS Compliant
- Halogen Free\*

**Features**

$V_{DS}$  (V) = -40V  
 $I_D$  = -40A ( $V_{GS} = -10V$ )  
 $R_{DS(ON)} < 15m\Omega$  ( $V_{GS} = -10V$ )  
 $R_{DS(ON)} < 20m\Omega$  ( $V_{GS} = -4.5V$ )

**100% UIS Tested!**  
**100% Rg Tested!**



**Absolute Maximum Ratings  $T_C=25^\circ C$  unless otherwise noted**

Parameter	Symbol	Maximum	Units
Drain-Source Voltage	$V_{DS}$	-40	V
Gate-Source Voltage	$V_{GS}$	$\pm 20$	V
Continuous Drain Current <sup>B,H</sup>	$I_D$	$T_C=25^\circ C$	A
		$T_C=100^\circ C$	
Pulsed Drain Current <sup>C</sup>	$I_{DM}$	-115	A
Avalanche Current <sup>C</sup>	$I_{AR}$	-42	A
Repetitive avalanche energy $L=0.1mH$ <sup>C</sup>	$E_{AR}$	88	mJ
Power Dissipation <sup>B</sup>	$P_D$	$T_C=25^\circ C$	W
		$T_C=100^\circ C$	
Power Dissipation <sup>A</sup>	$P_{DSM}$	$T_A=25^\circ C$	W
		$T_A=70^\circ C$	
Junction and Storage Temperature Range	$T_J, T_{STG}$	-55 to 175	$^\circ C$

**Thermal Characteristics**

Parameter	Symbol	Typ	Max	Units
Maximum Junction-to-Ambient <sup>A,G</sup>	$R_{\theta JA}$	15	20	$^\circ C/W$
$t \leq 10s$				
Maximum Junction-to-Ambient <sup>A,G</sup>	$R_{\theta JC}$	41	50	$^\circ C/W$
Steady-State				
Maximum Junction-to-Case <sup>D,F</sup>	$R_{\theta JC}$	2	2.4	$^\circ C/W$
Steady-State				

Electrical Characteristics ( $T_J=25^\circ\text{C}$  unless otherwise noted)

Symbol	Parameter	Conditions	Min	Typ	Max	Units
<b>STATIC PARAMETERS</b>						
$BV_{DSS}$	Drain-Source Breakdown Voltage	$I_D=-250\mu\text{A}$ , $V_{GS}=0\text{V}$	-40			V
$I_{DSS}$	Zero Gate Voltage Drain Current	$V_{DS}=-40\text{V}$ , $V_{GS}=0\text{V}$			-1	$\mu\text{A}$
		$T_J=55^\circ\text{C}$			-5	
$I_{GSS}$	Gate-Body leakage current	$V_{DS}=0\text{V}$ , $V_{GS}=\pm 20\text{V}$			$\pm 100$	nA
$V_{GS(th)}$	Gate Threshold Voltage	$V_{DS}=V_{GS}$ , $I_D=-250\mu\text{A}$	-1.7	-1.9	-3	V
$I_{D(ON)}$	On state drain current	$V_{GS}=-10\text{V}$ , $V_{DS}=-5\text{V}$	-115			A
$R_{DS(ON)}$	Static Drain-Source On-Resistance	$V_{GS}=-10\text{V}$ , $I_D=-20\text{A}$		12.5	15	m $\Omega$
		$T_J=125^\circ\text{C}$		19	23	
		$V_{GS}=-4.5\text{V}$ , $I_D=-15\text{A}$		16	20	
$g_{FS}$	Forward Transconductance	$V_{DS}=-5\text{V}$ , $I_D=-20\text{A}$		50		S
$V_{SD}$	Diode Forward Voltage	$I_S=-1\text{A}$ , $V_{GS}=0\text{V}$		-0.72	-1	V
$I_S$	Maximum Body-Diode Continuous Current				-20	A
<b>DYNAMIC PARAMETERS</b>						
$C_{iss}$	Input Capacitance	$V_{GS}=0\text{V}$ , $V_{DS}=-20\text{V}$ , $f=1\text{MHz}$		2550		pF
$C_{oss}$	Output Capacitance			280		pF
$C_{rss}$	Reverse Transfer Capacitance			190		pF
$R_g$	Gate resistance	$V_{GS}=0\text{V}$ , $V_{DS}=0\text{V}$ , $f=1\text{MHz}$	2.5	4	6	$\Omega$
<b>SWITCHING PARAMETERS</b>						
$Q_g(-10\text{V})$	Total Gate Charge	$V_{GS}=-10\text{V}$ , $V_{DS}=-20\text{V}$ , $I_D=-20\text{A}$		42	55	nC
$Q_g(-4.5\text{V})$	Total Gate Charge			18.6		
$Q_{gs}$	Gate Source Charge			7		nC
$Q_{gd}$	Gate Drain Charge			8.6		nC
$t_{D(on)}$	Turn-On Delay Time			9.4		ns
$t_r$	Turn-On Rise Time	$V_{GS}=-10\text{V}$ , $V_{DS}=-20\text{V}$ , $R_L=1\Omega$ ,		20		ns
$t_{D(off)}$	Turn-Off Delay Time	$R_{GEN}=3\Omega$		55		ns
$t_f$	Turn-Off Fall Time			30		ns
$t_{rr}$	Body Diode Reverse Recovery Time	$I_F=-20\text{A}$ , $dI/dt=100\text{A}/\mu\text{s}$		38	49	ns
$Q_{rr}$	Body Diode Reverse Recovery Charge	$I_F=-20\text{A}$ , $dI/dt=100\text{A}/\mu\text{s}$		47		nC

A: The value of  $R_{\theta JA}$  is measured with the device in a still air environment with  $T_A=25^\circ\text{C}$ . The power dissipation  $P_{DSM}$  and current rating  $I_{DSM}$  are based on  $T_{J(MAX)}=150^\circ\text{C}$ , using steady state junction-to-ambient thermal resistance.

B: The power dissipation  $P_D$  is based on  $T_{J(MAX)}=175^\circ\text{C}$ , using junction-to-case thermal resistance, and is more useful in setting the upper dissipation limit for cases where additional heatsinking is used.

C: Repetitive rating, pulse width limited by junction temperature  $T_{J(MAX)}=175^\circ\text{C}$ .

D: The  $R_{\theta JA}$  is the sum of the thermal impedance from junction to case  $R_{\theta JC}$  and case to ambient.

E: The static characteristics in Figures 1 to 6 are obtained using  $<300\mu\text{s}$  pulses, duty cycle 0.5% max.

F: These curves are based on the junction-to-case thermal impedance which is measured with the device mounted to a large heatsink, assuming a maximum junction temperature of  $T_{J(MAX)}=175^\circ\text{C}$ . The SOA curve provides a single pulse rating.

G: These tests are performed with the device mounted on a 1 in<sup>2</sup> FR-4 board with 2oz. Copper, in a still air environment with  $T_A=25^\circ\text{C}$ .

H: The maximum current rating is limited by bond-wires.

\*This device is guaranteed green after data code 8X11 (Sep 1<sup>ST</sup> 2008).

Rev4: April, 2012

COMPONENTS IN LIFE SUPPORT DEVICES OR SYSTEMS ARE NOT AUTHORIZED. AOS DOES NOT ASSUME ANY LIABILITY ARISING OUT OF SUCH APPLICATIONS OR USES OF ITS PRODUCTS. AOS RESERVES THE RIGHT TO IMPROVE PRODUCT DESIGN, FUNCTIONS AND RELIABILITY WITHOUT NOTICE.

TYPICAL ELECTRICAL AND THERMAL CHARACTERISTICS

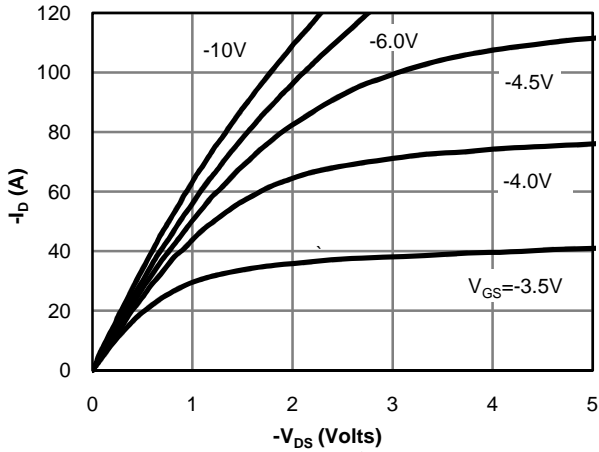


Figure 1: On-Region Characteristics

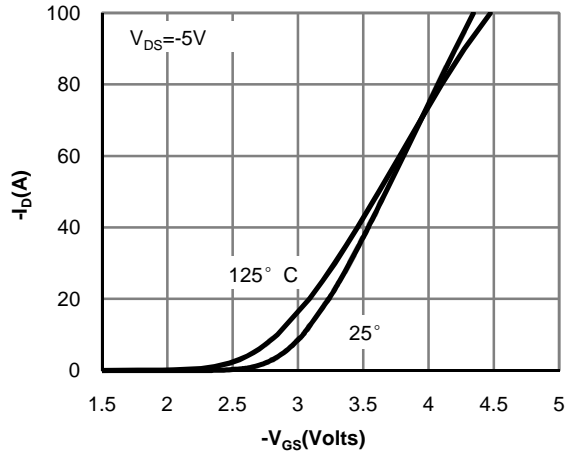


Figure 2: Transfer Characteristics

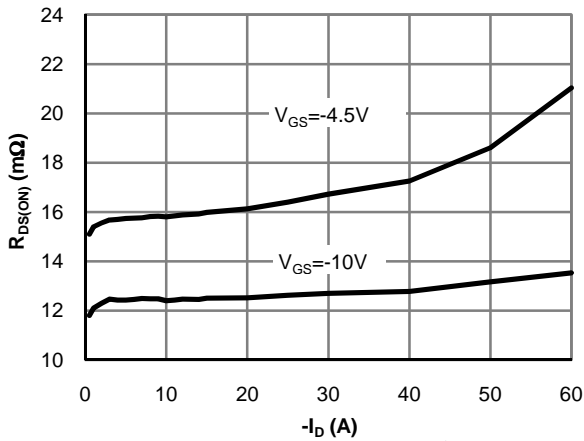


Figure 3: On-Resistance vs. Drain Current and Gate Voltage

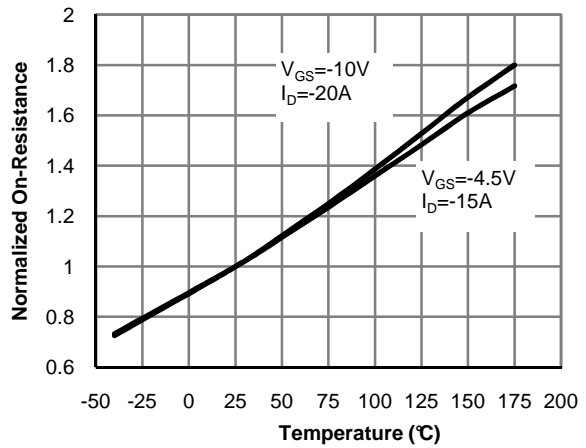


Figure 4: On-Resistance vs. Junction Temperature

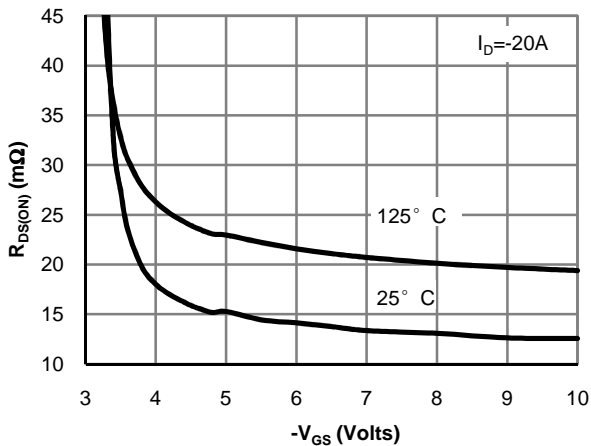


Figure 5: On-Resistance vs. Gate-Source Voltage

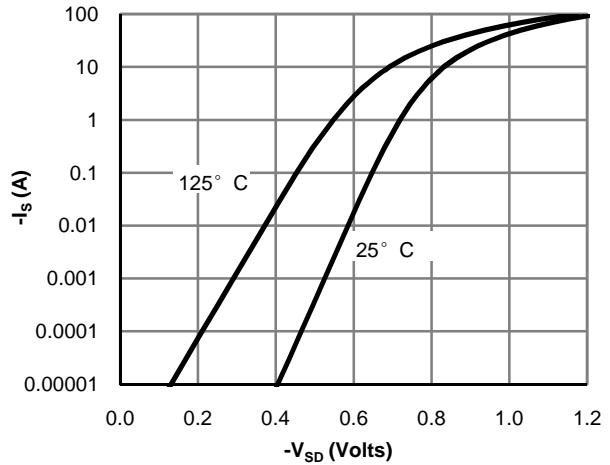


Figure 6: Body-Diode Characteristics

TYPICAL ELECTRICAL AND THERMAL CHARACTERISTICS

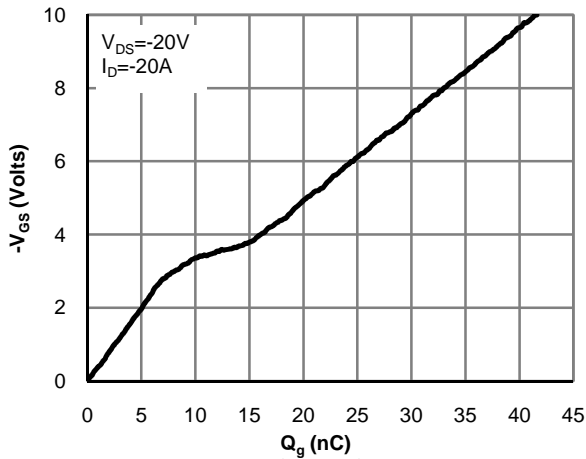


Figure 7: Gate-Charge Characteristics

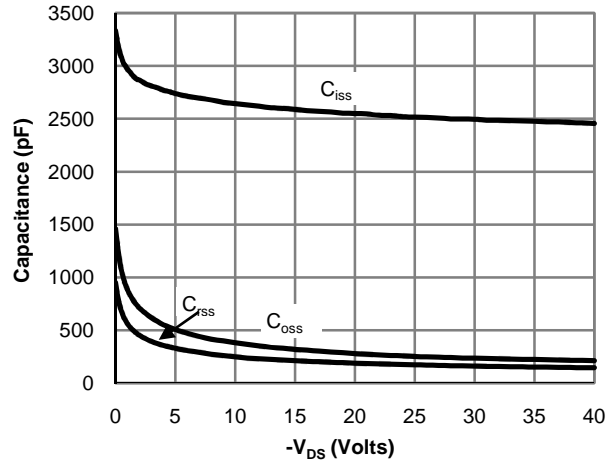


Figure 8: Capacitance Characteristics

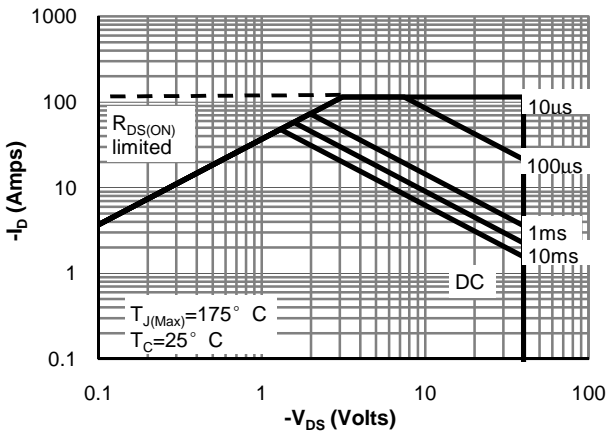


Figure 9: Maximum Forward Biased Safe Operating Area (Note F)

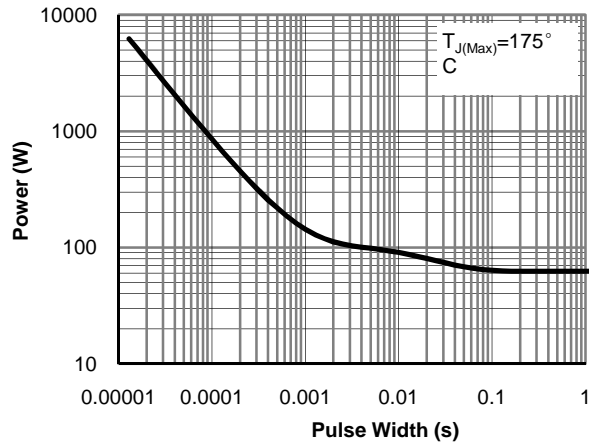


Figure 10: Single Pulse Power Rating Junction-to-Case (Note F)

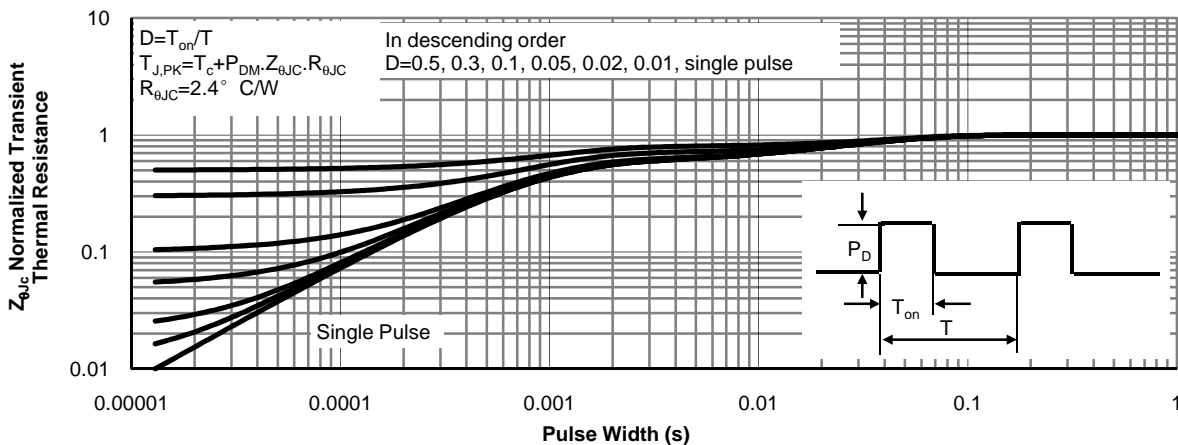


Figure 11: Normalized Maximum Transient Thermal Impedance (Note F)

TYPICAL ELECTRICAL AND THERMAL CHARACTERISTICS

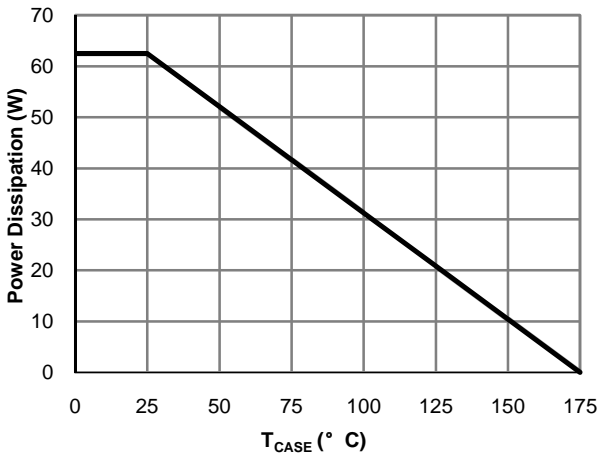


Figure 12: Power De-rating (Note B)

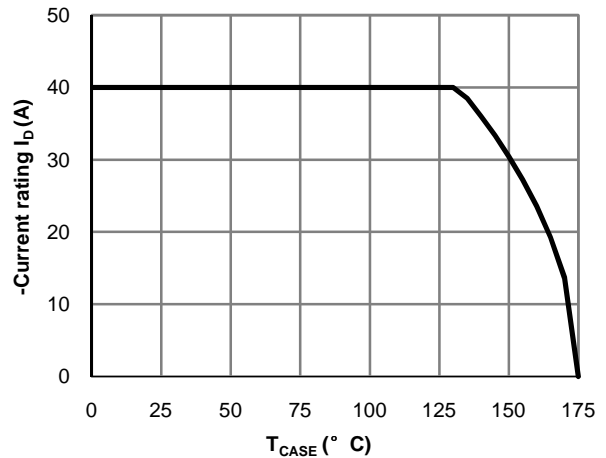


Figure 13: Current De-rating (Note B)

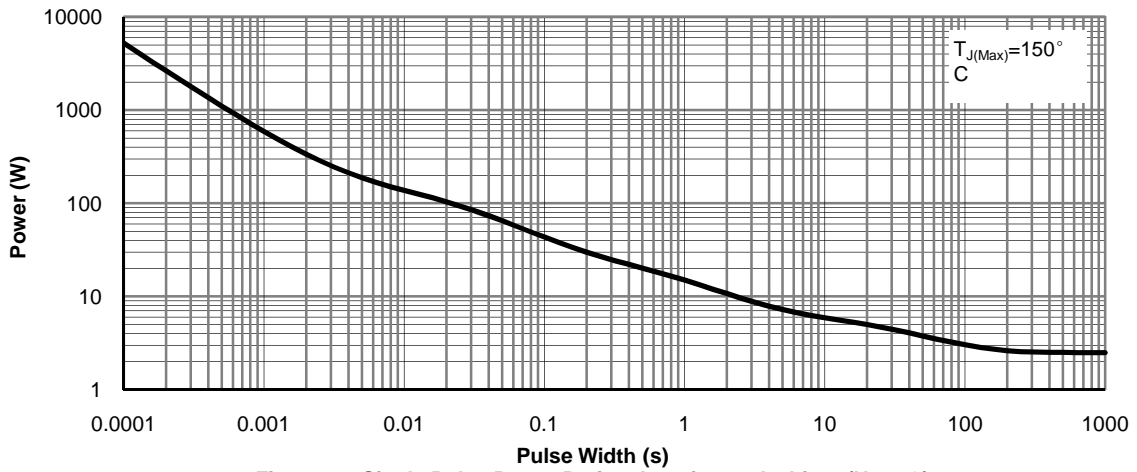


Figure 14: Single Pulse Power Rating Junction-to-Ambient (Note G)

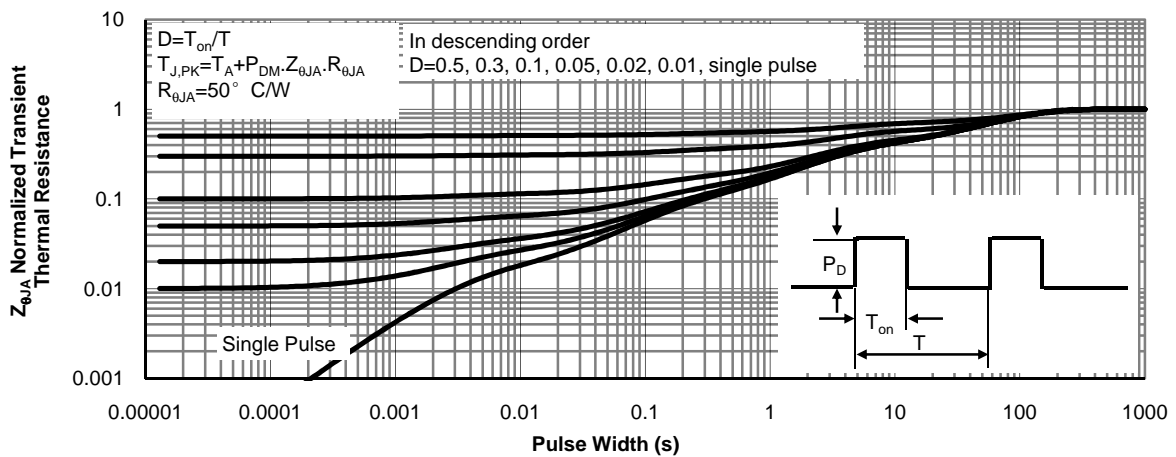
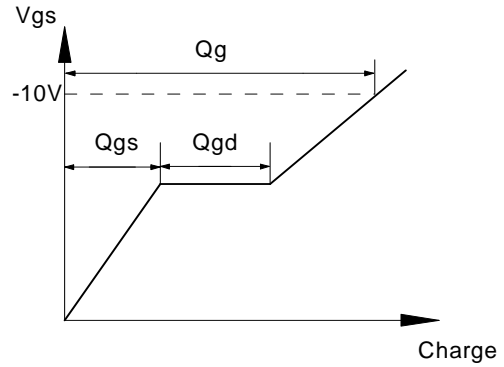
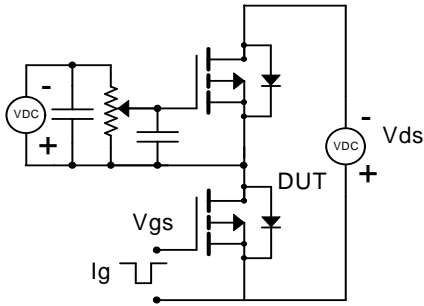
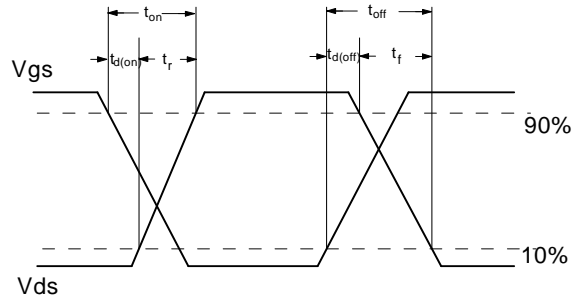
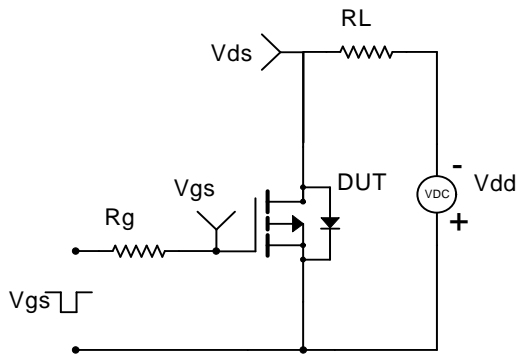


Figure 15: Normalized Maximum Transient Thermal Impedance (Note G)

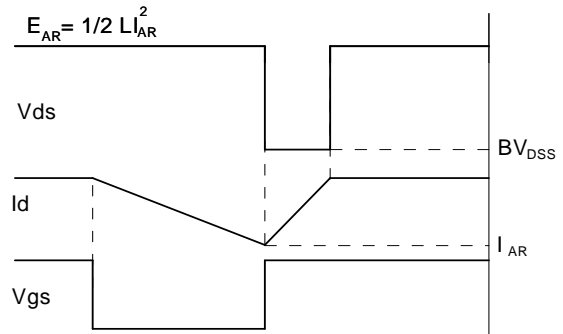
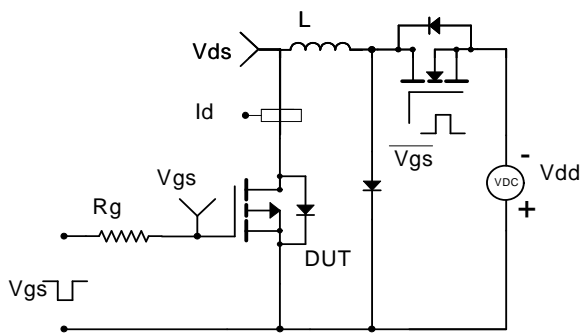
Gate Charge Test Circuit & Waveform



Resistive Switching Test Circuit & Waveforms



Unclamped Inductive Switching (UIS) Test Circuit & Waveforms



Diode Recovery Test Circuit & Waveforms

