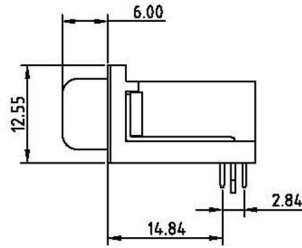


C0052-XXMBAXXBR



ELECTRICAL CHARACTERISTICS

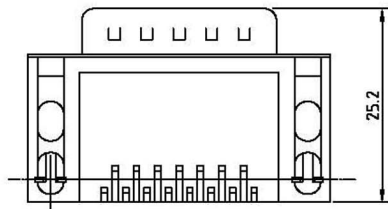
Contact Current Rating: 3Amperes.
 Dielectric Withstanding Voltage: AC 500V at sea level.
 Insulation Resistance: 1000Megohms Min.
 Contact Resistance: 30Milliohms Max.
 Operation Temperature : -55°C to +105°C.

Material

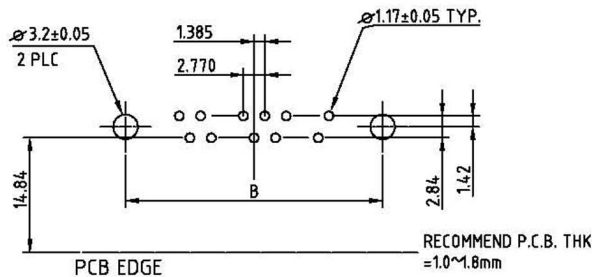
Contact :Copper Alloy.
 Insulator:PBT. [Select PA6T /LCP /PA9T]
 Shell: SPCC.
 Z-Piece: Copper Alloy.
 Screw: Copper Alloy.
 Rivet: Copper Alloy. or Zinc.

Note:

No.	A	B	C
09	16.92	24.99	30.81
15	25.25	33.32	39.14
25	38.96	47.04	53.04
37	55.42	63.50	69.32

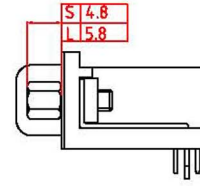
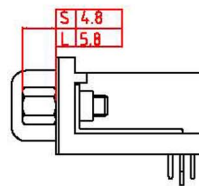


Recommend PCB Layout



C0552-XXMACXXBR

C0552-XXFBCXXBR



RoHS Compliant		玄茂科技股份有限公司 HSUAN MAO TECHNOLOGY CO., LTD.	
APPD. 核准 Angel		TOLERANCE 容許公差 .0 ±0.30 .00 ±0.25 ANG. ±	PART NAME 品名 D-SUB PCB RIGHT ANGLE 13.84mm STAMPED PIN XXP MALE BLACK ROHS LOW-LEAD
DWG. 製圖 Yumi	SCALE 比例 參考 UNIT 單位 M M PAGE 張數 1 OF 1	SIZE 紙張尺寸 A 4 REV. 版次 A	PART NO. 料號 C0552-XXMXXXBR
DATE 製表日 2008/09/12			