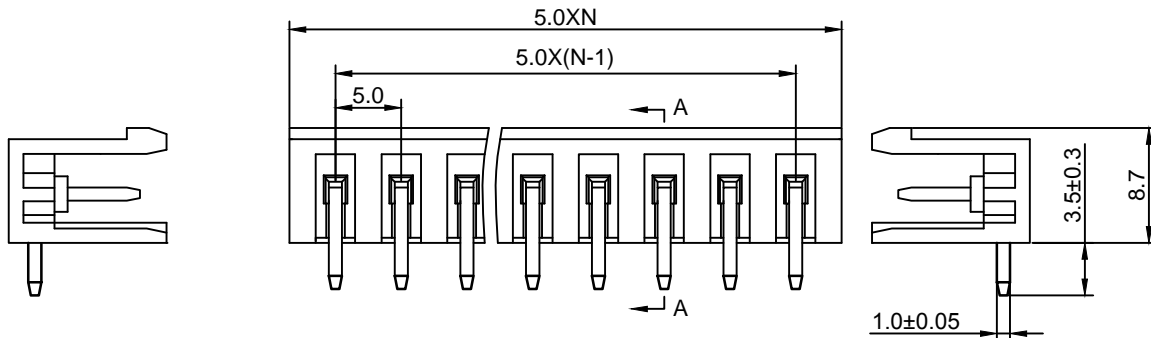


**Material :**

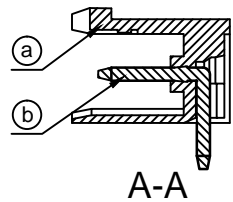
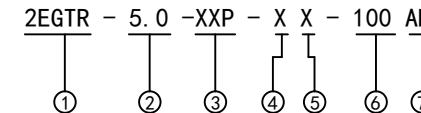
- Ⓐ Housing : PA66(UL94V-0)
- Ⓑ Pin Header : Brass , Tin Plated

**Electrical :**

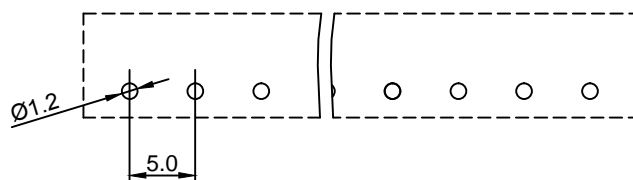
- |  |      |      |
|--|------|------|
|  | UL   | IEC  |
| 1.Rated Voltage :                      | 300V | 320V |
| 2.Rated Current :                      | 15A  | 20A  |
| 3.Withstanding Voltage : AC1600V/1Min. |      |      |
| 4.Operating Temperature : -40°C~+105°C |      |      |
| 5. RoHS Compliance                     |      |      |
| 6.Safety Approval :                    |      |      |
| 7.Undimensioned Tolerances:            |      |      |



Pitch Range In mm			Nominal Dimension Range In mm					—	∩	∇
≤6	6 ~ 10	10 ~ 24	≤30	30 ~ 60	60 ~ 100	100 ~ 150	>150	0.05/10		
±0.10	±0.15	±0.25	±0.20	±0.30	±0.50	±0.70	±1.00	±0.1°		



- ① Series NO.
- ② Pitch
- ③ Poles  
02 02Contacts  
03 03Contacts  
...  
24 24Contacts
- ④ 1 Single Pitch  
2 Double Pitch
- ⑤ Color: 1 Grey  
2 Blue  
3 Black  
4 Green(Standard For AH)  
5 Orange  
6 Red  
7 Transparent  
8 Yellow  
9 White
- ⑥ Customer Request: 100--Standard
- ⑦ AH--Standard(PA66)



DETACHED LISTS	<b>Grolten</b> 宁波冠泰电子有限公司 NINGBO GOLTEN ELECTRONICS CO., LTD.	
	APPD: MA_4/11/16'	PART NO. 2EGTR-5.0-XXP-XX-100AH
	CHKD: Yu_4/10/16'	
	DRFT: Chen_4/9/16'	
 THIRD ANGLE PROJECTION	DRAWING NO.	REV 1
	DO NOT SCALE DRAWING	SHEET 1/1
	SCALE 1/1	