

IP 68

05

- SP Series IP68
- Threaded coupling



★ Each side can be male or female contact

Material and spec

Coupling	Threaded	
Shell material	PC, Nylon66, fire resistance: V-0	
Insert material	PPS, max temperature 260 °C; Insert material: PA66(New Screw)	
Contact material	Brass with gold plating	
Termination	Solder: SP11, SP13, SP17, SP21, SP25, SP29, Crimp: SP17, SP21, SP25, SP29 Screw: SP17, SP21, SP25, SP29 (Ø2.0, Ø2.5, Ø3, Ø3.5mm contact)	
Cable outer diameter range	SP11: I: 3-4mm, II: 4-6.5mm SP17: 6-10mm SP25: I: 10-14mm, II: 7-12mm	SP13: I: 4-6.5mm, II: 5-8mm SP21: I: 4.5-7mm, II: 7-12mm, III: 5-9mm SP29: I: 9-13mm, II: 13-16mm
IP rating	IP68	
Mating cycle	500	
Temperature range	-40°C ~ +85°C	
Insulation resistance	2000 MΩ	

SP29 Series

**SP
29**



Cable connector
Mate with SP2911, SP2911C,
SP2912, SP2913

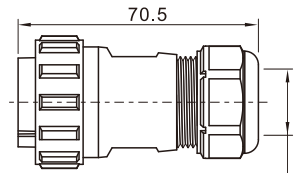
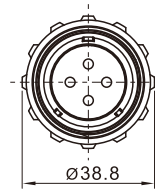
SP2910 / P --- SP2910 / S

Male contact

1:solder, 2:screw, 3:crimp

Cable outer diameter range
I: 9-13mm II: 13-16mm

Number of contact
Female contact

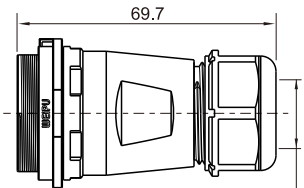
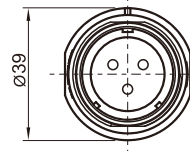


I: 9-13mm
II: 13-16mm
Cable outer diameter range



In-line cable connector C
Mate with SP2910

SP2911C / P --- SP2911C / S



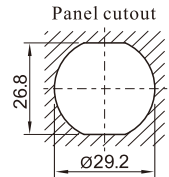
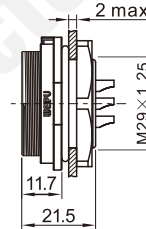
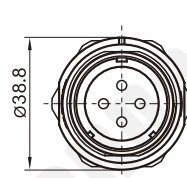
I: 9-13mm
II: 13-16mm
Cable outer diameter range



Rear-nut mount
Mate with SP2910

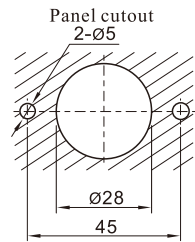
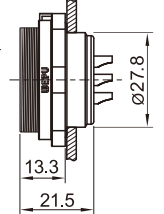
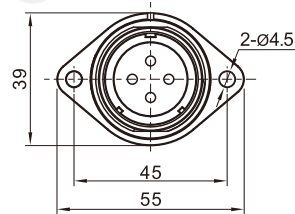
SP2912 / P --- SP2912 / S

Number of contact



2-hole flange
Mate with SP2910

SP2913 / P --- SP2913 / S



Solder contact spec

★ Crimp contact spec see P20

★ Screw contact spec see P21

Number of contact	2	3	4	7	8	8B	9	10	10B	12	16	17	20	24	26	35
Male contact face view																
Rated current (A)	50	50	25	25	25	60, 5	25, 5	25	10	10	10	10	5	5	5	5
Contact diameter(mm)	Ø3.5X2	Ø3.5X3	Ø2.5X4	Ø2.5X7	Ø2.5X8	Ø5X2 Ø1X6	Ø2.5X4 Ø1X5	Ø2.5X10	Ø1.5X10	Ø1.5X12	Ø1.5X16	Ø1.5X17	Ø1X20	Ø1X24	Ø1X26	Ø1X35
Rated voltage (AC.V)	500	500	500	500	500	500 400	500	500	500	500	500	500	400	400	400	400
Test voltage(AC.V) 1 min	1500	1500	1500	1500	1500	1500	1500	1500	1500	1500	1500	1500	1200	1200	1200	1200
Contact resistance(mΩ)	0.5	0.5	1	1	1	0.5, 5	1, 5	1	2.5	2.5	2.5	2.5	5	5	5	5
Termination	solder / screw	solder / screw	solder / screw	solder / screw	solder / screw	solder	solder	solder / screw	solder	solder	solder	solder	solder	solder	solder	solder
Wire size (mm ² /AWG)	≤10/7	≤10/7	≤4/11	≤4/11	≤4/11	≤16/5 ≤0.75/18	≤4/11 ≤0.75/18	≤4/11	≤2/14	≤2/14	≤2/14	≤2/14	≤2/14	≤0.75/18	≤0.75/18	≤0.75/18
Wire size for screw termination	≤6/10	≤6/10	≤1.5/15	≤1.5/15	≤1.5/15	/	/	≤1.5/15	/	/	/	/	/	/	/	/

In-line cable connector
SP2911C/S___-__



Rear-nut mount
SP2912/S___-__



C: with cap; N: without cap
1:Solder,2:Screw,3:Crimp
Number of contact

2-hole flange
SP2913/S___-__



Cable connector



SP2910/P___-N

1:Solder,2:Screw,3:Crimp
Cable outer diameter:
I: 9-13mm, II:13-16mm
Number of contact

In-line cable connector
SP2911C/P___-__



Rear-nut mount
SP2912/P___-__



2-hole flange
SP2913/P___-__



Cable connector



SP2910/S___-N